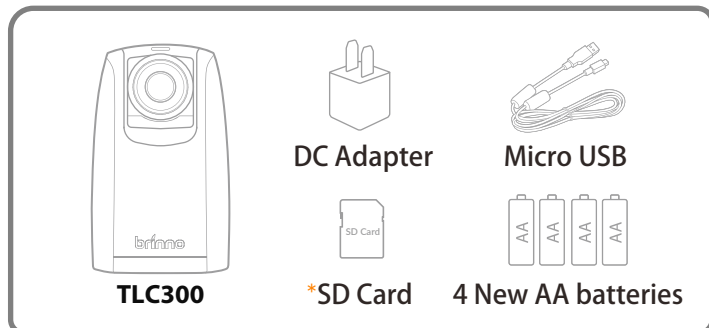


Firmware Upgrade Procedure

Time Lapse Camera TLC300

version EN A5 202604

• Prepare items



*We recommend that the SD card that came with the camera be used for all firmware updates. If you are using a new SD card that is over 32GB it will need to be formatted by your camera before it can be used. To format a new SD card, insert the card into your camera and follow the formatting prompts on the LCD screen before you start the firmware upgrade process.

• Download firmware

1. Download the firmware upgrade package from the location below:
www.brinno.com/pages/support-tlc300
2. Unzip the compressed file and find two folders, “STEP1” and “STEP2” folders.
3. Upgrade your firmware in two steps.

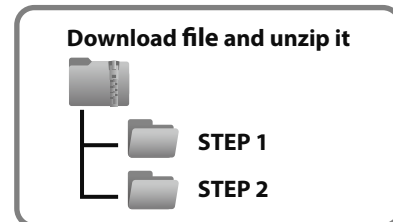
• STEP 1

1. Duplicate the “tlc300bl.uf2” file in the “STEP 1” folder to the root directory of the SD card. (SD:/)
2. Install 4 new AA batteries to the camera and connect the camera to external power using a micro USB and DC adapter.

Ensure 4 AA batteries already inside the camera. THEN, insert the SD card into the camera.

3. Turn on the camera and it will automatically upgrade the firmware.
4. The LED indicator and the LCD display will flash constantly for about 1 minute while the firmware is upgrading.
5. When the upgrade is completed, the camera will restart automatically and return to the preview screen.
6. Turn off the camera and remove the SD card for the next upgrade procedure.

• Download firmware



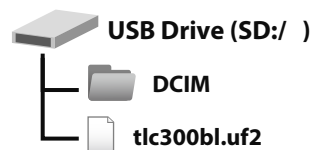
• STEP 1

Insert SD card to PC

Copy file from the folder

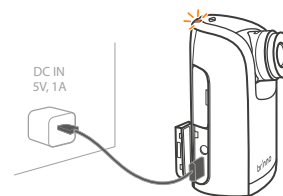


Paste file to the root directory of the SD card



Install batteries BEFORE inserting SD card

Insert the SD card, and turn-on the camera.



LCD display will show “Update” LED indicator will flash for 1 min



Proceed to Step2 after returning to the preview screen

Firmware Upgrade Procedure

Time Lapse Camera TLC300

version EN A5 202604

• STEP 2

7. Duplicate the “tlc300fw.bin”, “tlc300hw.udf”, “tlc300ui.uf2” files in “STEP 2” folder to the root directory of the SD card.
8. **Install 4 new AA batteries to the camera and connect the camera to external power using a micro USB and DC adapter.**
9. Insert the SD card into the camera.
10. Turn on the camera and it will automatically upgrade the firmware.
11. Step 2 upgrading procedure will take longer, **the LED indicator and the LCD display will flash constantly for about 5 minutes while the firmware is upgrading.**
12. When the upgrade is completed, the camera will restart automatically and return to the preview screen.
13. Confirm the firmware version in the camera setting.
MENU>Advanced>System Info

• Note:

Do not TURN OFF power or REMOVE SD card when camera is updating firmware as that will damage the camera!

• STEP 2

