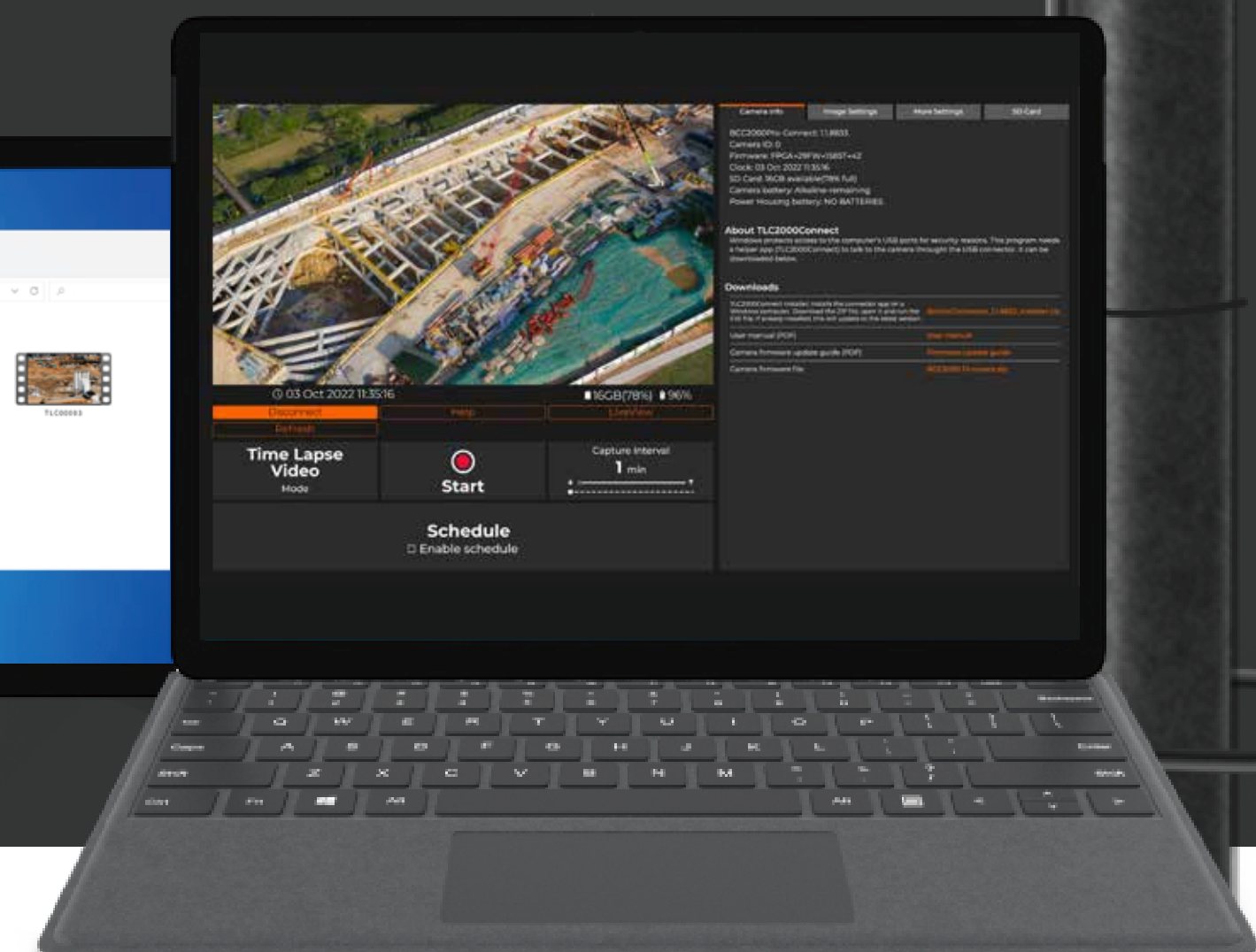
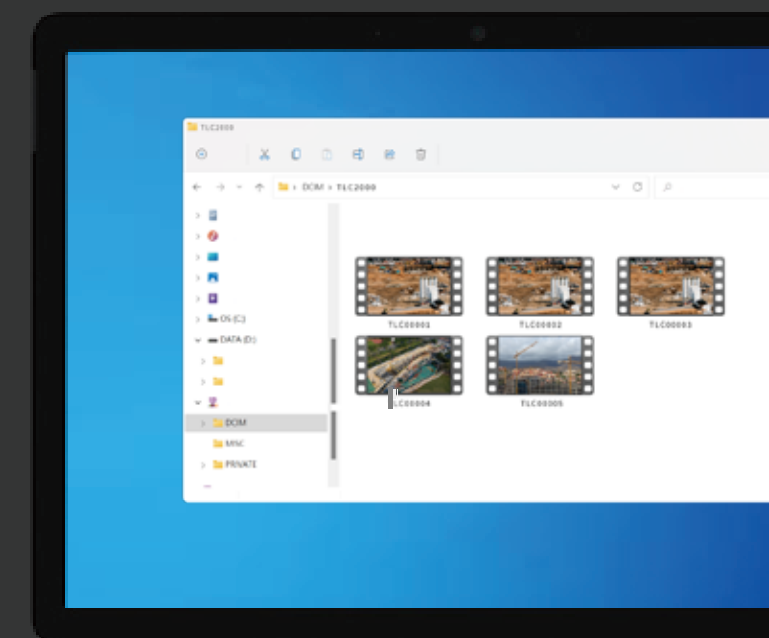




Brinno Command Center Instructions

Some functions are still under development
and if you run into any issues or have feedback please send us
an email at customerservice@brinno.com



CONTENTS

 Upgrade Camera Firmware ————— 3

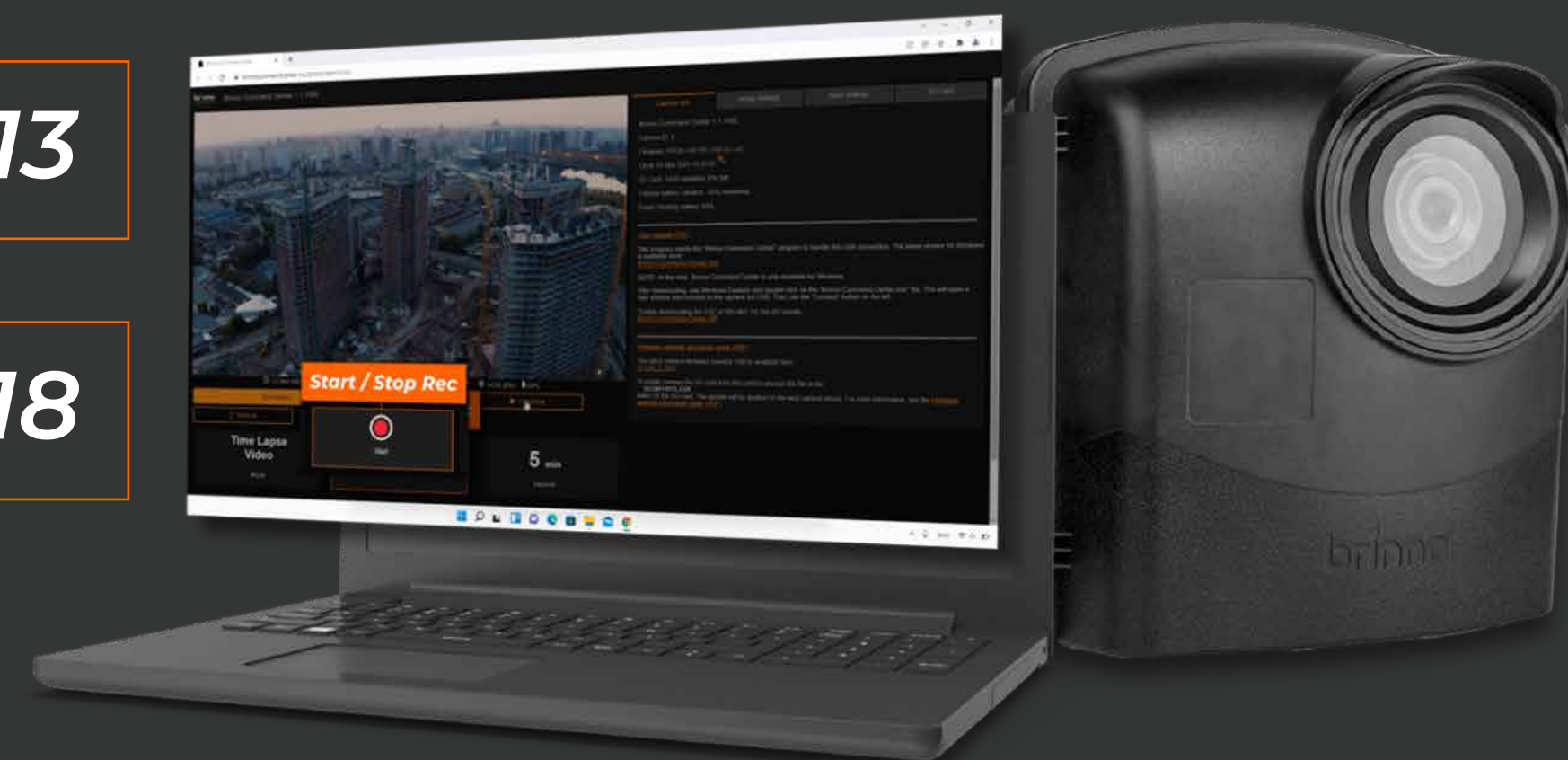
 Download & Install Brinno Command Center ——— 5

 Install offline Brinno Command Center ————— 7

 Before using Brinno Command Center ————— 10

 Brinno Command Center step-by-step ————— 13

 Appendix & Support ————— 18

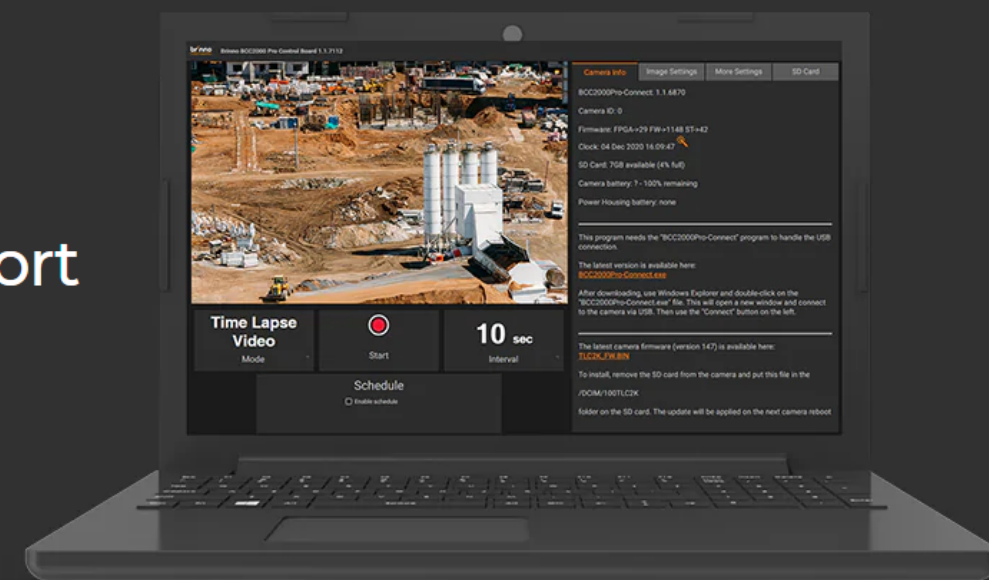




Upgrade Camera Firmware



Brinno Command Center Support Center



Download Steps

Please make sure you follow the steps and don't miss anything

STEP 1 - Follow Manual Instructions

IMPORTANT :

Follow the instructions in the Command Center Manual before downloading or using the program.

DOWNLOAD

STEP 2 - Upgrade Firmware

IMPORTANT :

(1). Go to the TLC2000/TLC2020 support page and download firmware in your desired language.

(2). Must download firmware with Windows only (not compatible with macOS).

(3). Follow the PDF instructions or video tutorial to complete firmware upgrade.

SUPPORT PAGE

1-1.

Go to **TLC2000 / TLC2020 support page** to download firmware in your desired language. Follow the **PDF instructions** or **video tutorial** to complete firmware upgrade.

Firmware Upgrade Procedure

Procedure can be found here :



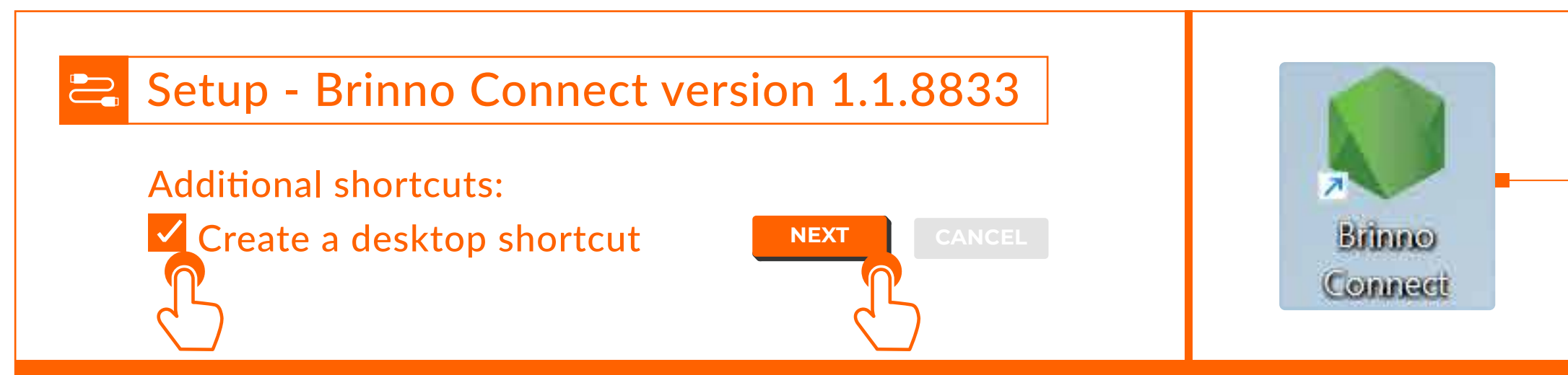
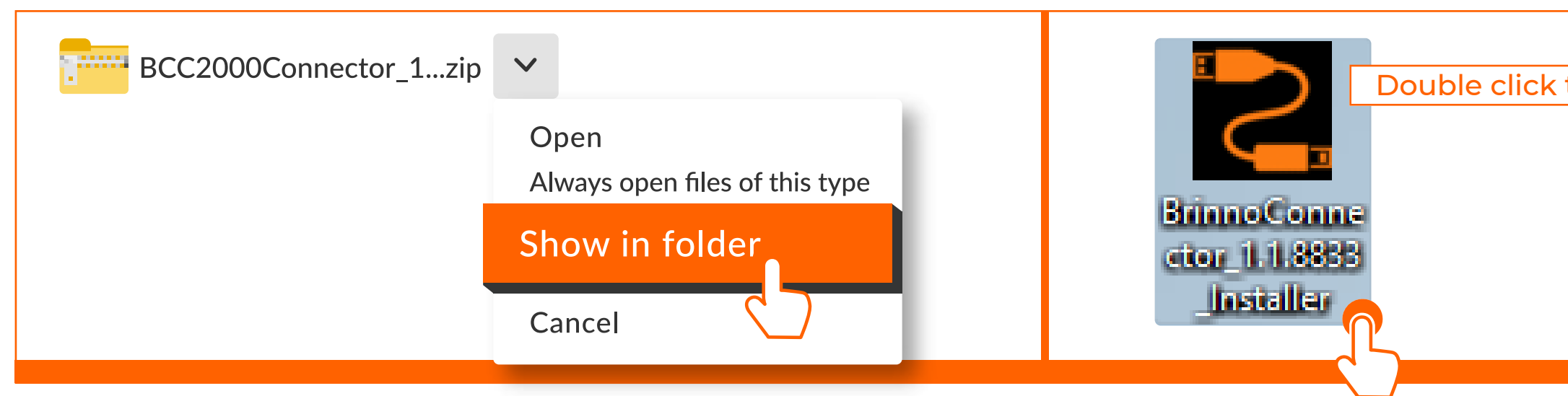
Video Tutorial



PDF Instructions



Download & Install Brinno Command Center



2-1. Download the Brinno Command Center installer.

Download the installation file and follow system instructions to complete the installation.

2-2. Create Shortcut.

Create a shortcut on the desktop by selecting "Create a desktop shortcut".



Install offline Brinno Command Center



Install offline Brinno Command Center

8_19

BCC2000 Control

bcc2000pro.my.brinno.com/home



Connect to helper app

Please run the TLC2000Connect helper app then click the "Connect" button.

Offline use

This is a Progressive Web Application (PWA) that can be installed on your computer. Once installed, it launches from an icon on the desktop like other apps.

Install app for offline use

About TLC2000Connect

Windows protects access to the computer's USB ports for security reasons. This program needs a helper app (TLC2000Connect) to talk to the camera through the USB connector. It can be downloaded below.

Downloads

TLC2000Connect Installer, Installs the connector app on a Windows computer. Download the ZIP file, open it and run the EXE file. If already installed, this will update to the latest version.

[BrinnoConnector_1.1.8833_Installer.zip](#)

User manual (PDF)

[User manual](#)

Camera firmware update guide (PDF)

[Firmware update guide](#)

Camera firmware file

[BCC2000 Firmware.zip](#)

Connect

Help

BCC2000 Control

bcc2000pro.my.brinno.com/home



Install app?



TLC2000 Control
bcc2000pro.my.brinno.com

INSTALL

CANCEL

2-3.

After installing the online Brinno Command Center, the computer will automatically execute Brinno Connect and open the command center with the default browser.

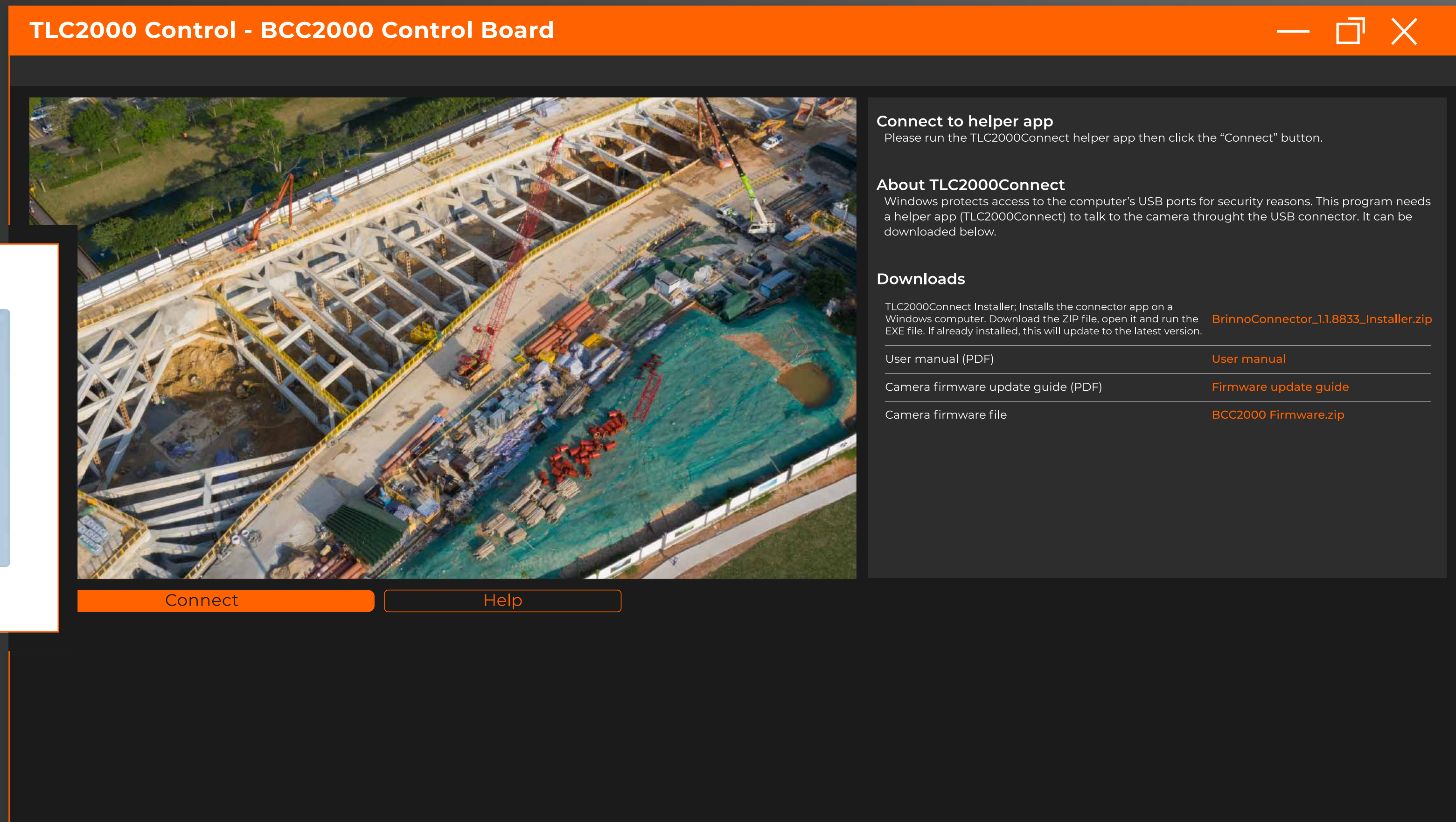
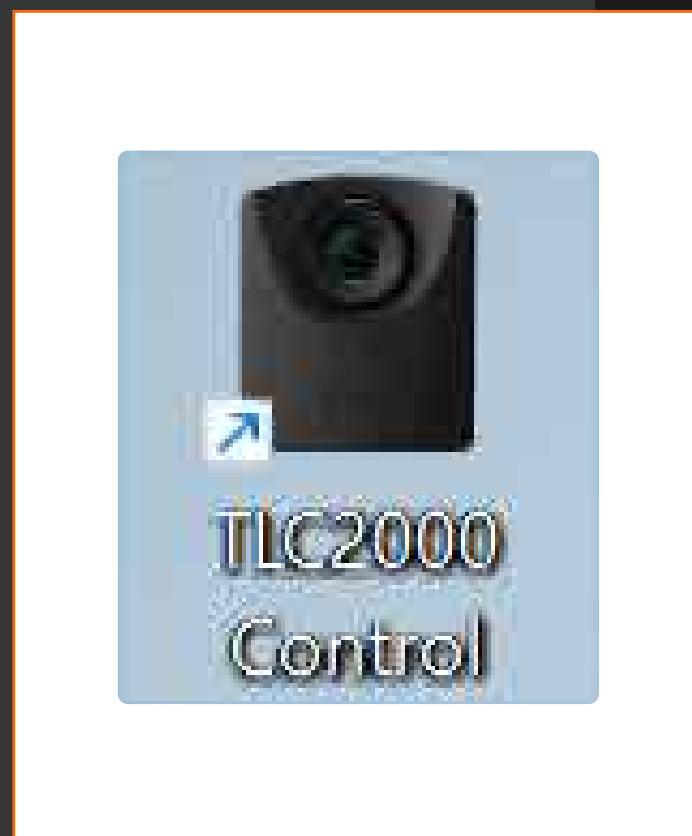
2-4.

Click "Install app for offline use" to install offline Brinno Command Center. (Mandatory step)

The download button might not appear immediately, so please wait for it to appear before clicking.

2-5.

Click "INSTALL" once the reminder window pops out.



2-6.

Once the offline Brinno Command Center is successfully installed, the offline command center window will pop out, and then you can close the online command center.

| Offline command center has an orange frame.



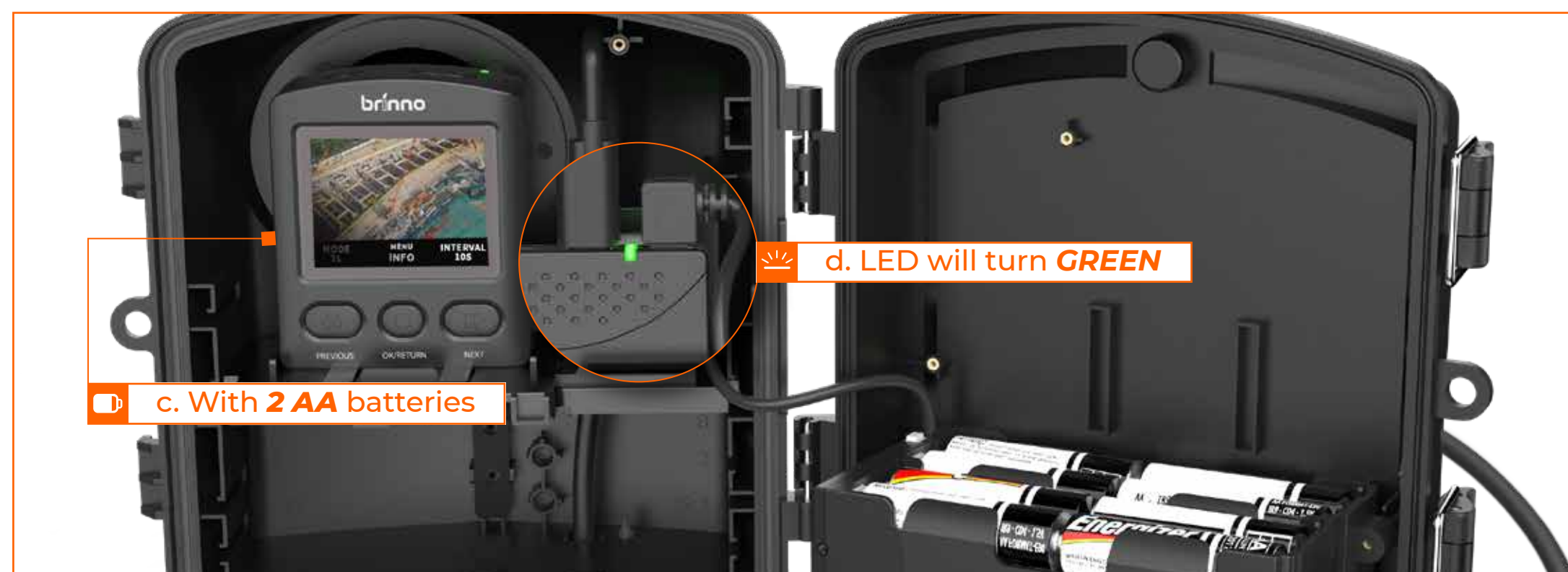
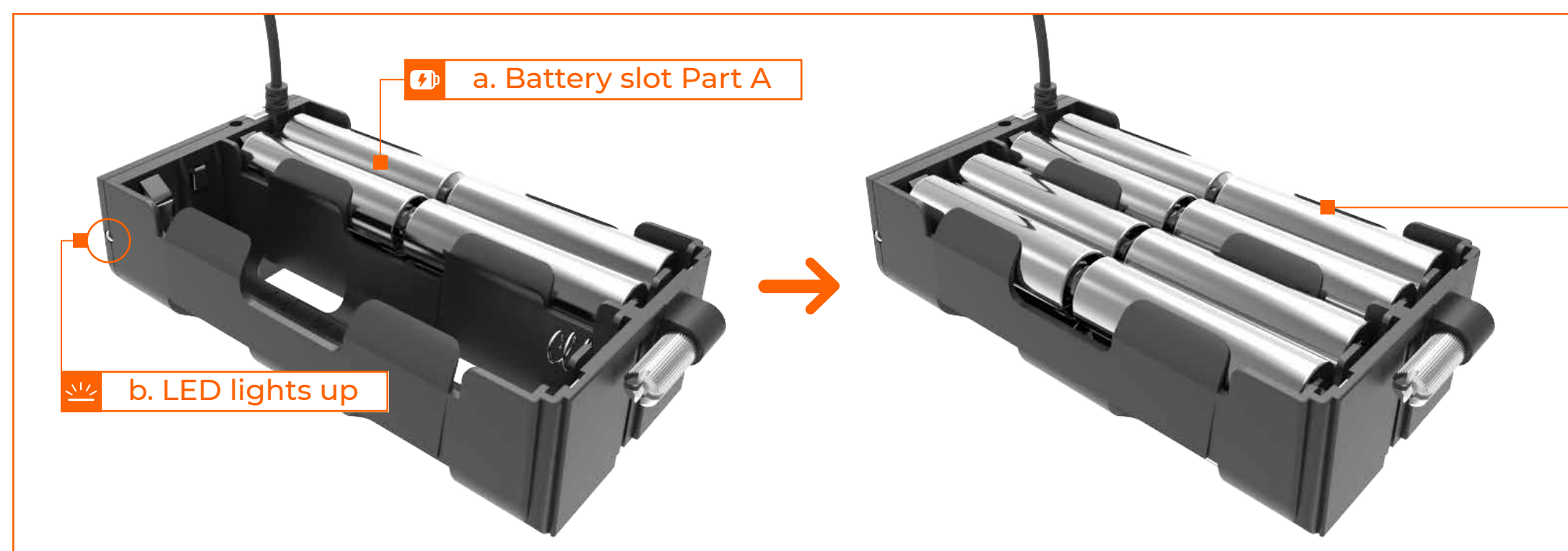
Before using Brinno Command Center



Before using Brinno Command Center

11_19

PLEASE FOLLOW THE STEPS BELOW TO MAKE SURE YOUR CAMERA IS INSTALLED CORRECTLY



3-1.

Install batteries to the Power Housing Battery Slot correctly.

Install 8 AA batteries on one side. If correctly inserted, the LED lights up. Next, remove one battery from the same side so the LED light turns off. Install another 8 AA batteries on the other side, if correctly inserted, the LED lights up again. Once confirmed that both sides of batteries were inserted correctly, insert the removed battery back to the battery slot. This will confirm that all **16 AA batteries were installed correctly**.

3-2.

Connect Brinno Camera Extender Kit (AFB1000) and battery slot to the camera.

Plug the cable into the Multi-task Dongle using the port on the left side. Plug the Battery Slot Micro USB connector into the port on the right side. Restart the camera - the dongle LED will turn **GREEN**, indicating you are ready to start filming.



Before using Brinno Command Center

12 _ 19

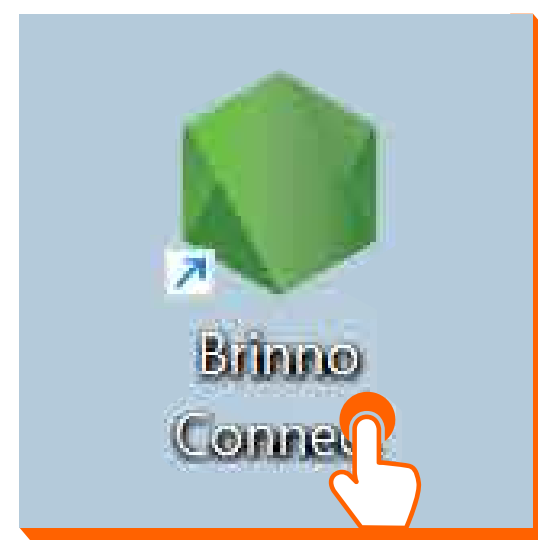
PLEASE FOLLOW THE STEPS BELOW TO MAKE SURE
YOUR CAMERA IS INSTALLED CORRECTLY



f. Close and lock



g. Plug the cable



h. Double click

3-3.

Make sure your camera is powered off before connecting to the Brinno Command Center.



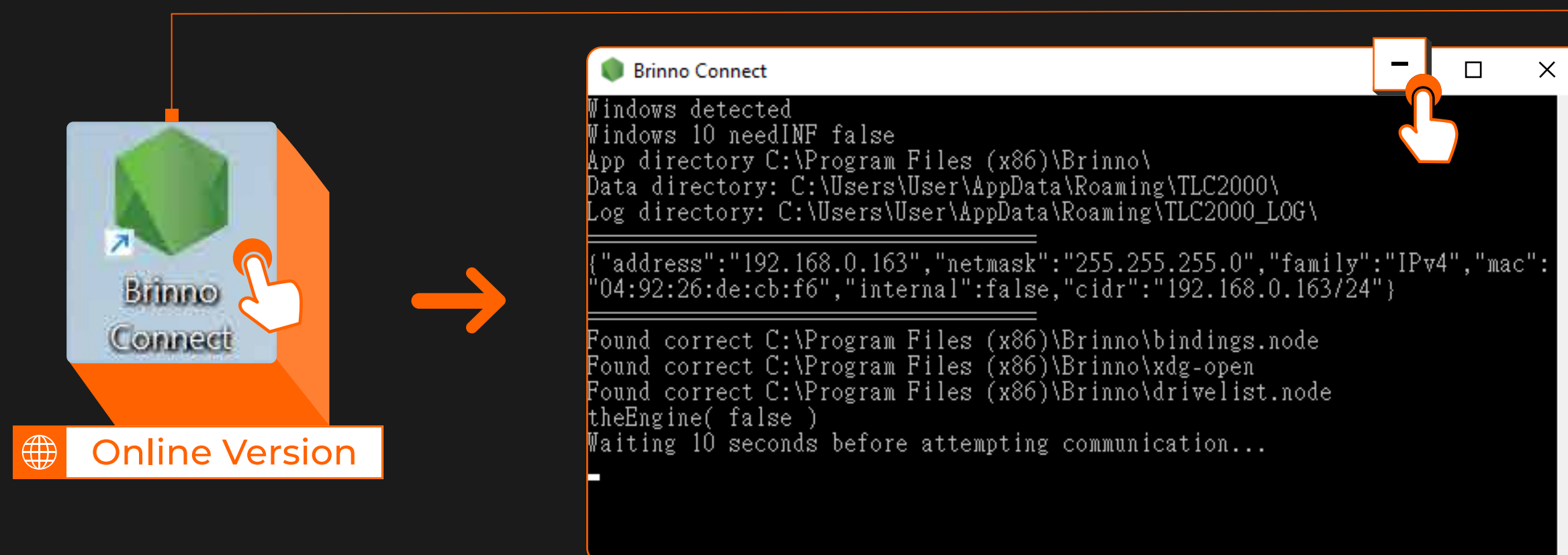
Turn off your camera and plug the cable into your laptop or tablet and then open the Brinno Command Center.



Brinno Command Center step-by-step



With Internet Connection



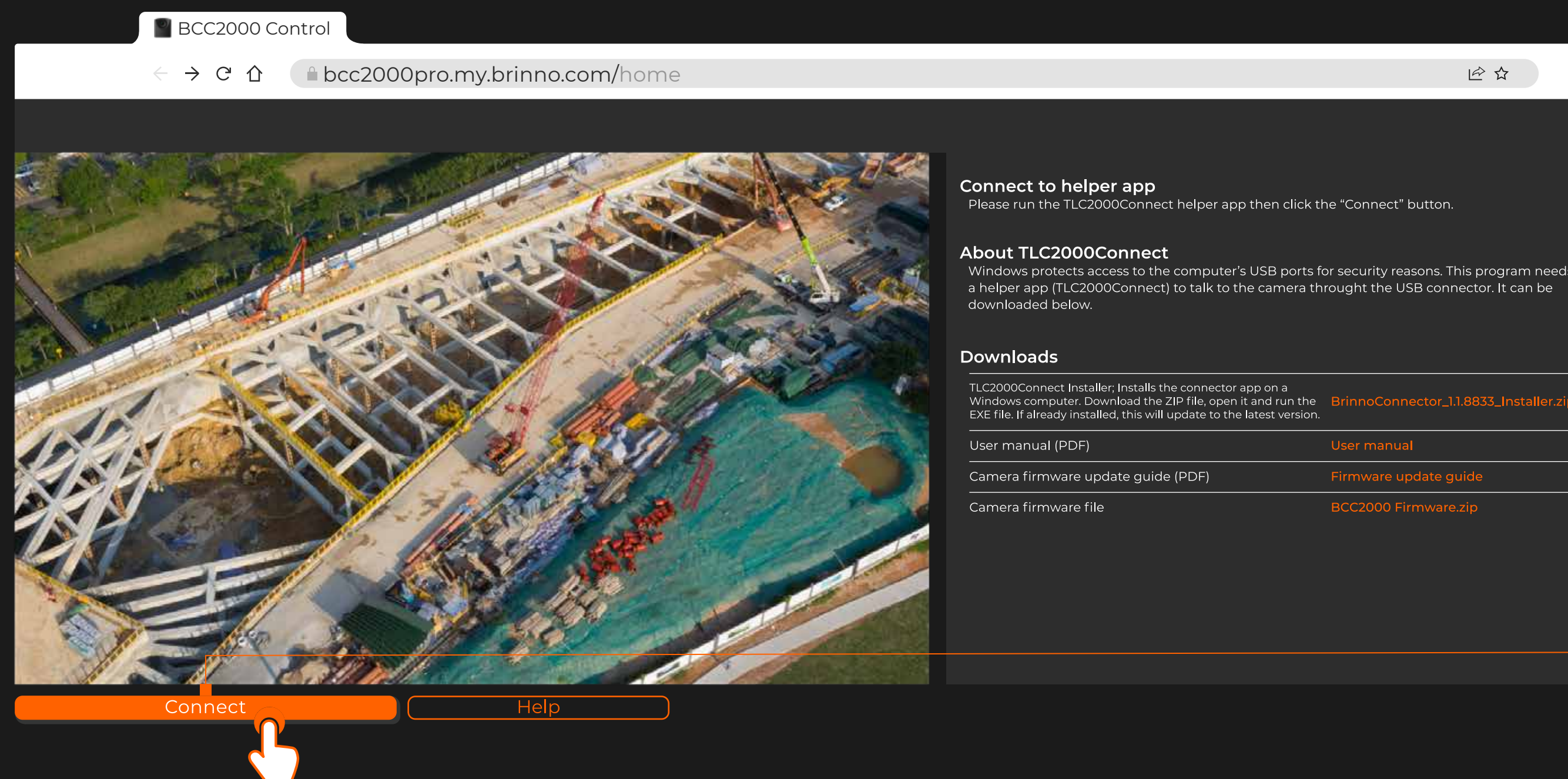
4-1. Open the Brinno Command Center on your computer.

*The **Online** Brinno Command Center will check for the latest firmware from the server when your computer is connected to the internet.

*The **Offline** Brinno Command Center is more stable when used offline(during operation under a non-internet environment.)

4-2. When the software starts, an operational window will pop-up followed by your web browser popping up with the Brinno Command Center page.

Minimize the operational window but do not close it otherwise you will disrupt the camera's connection.



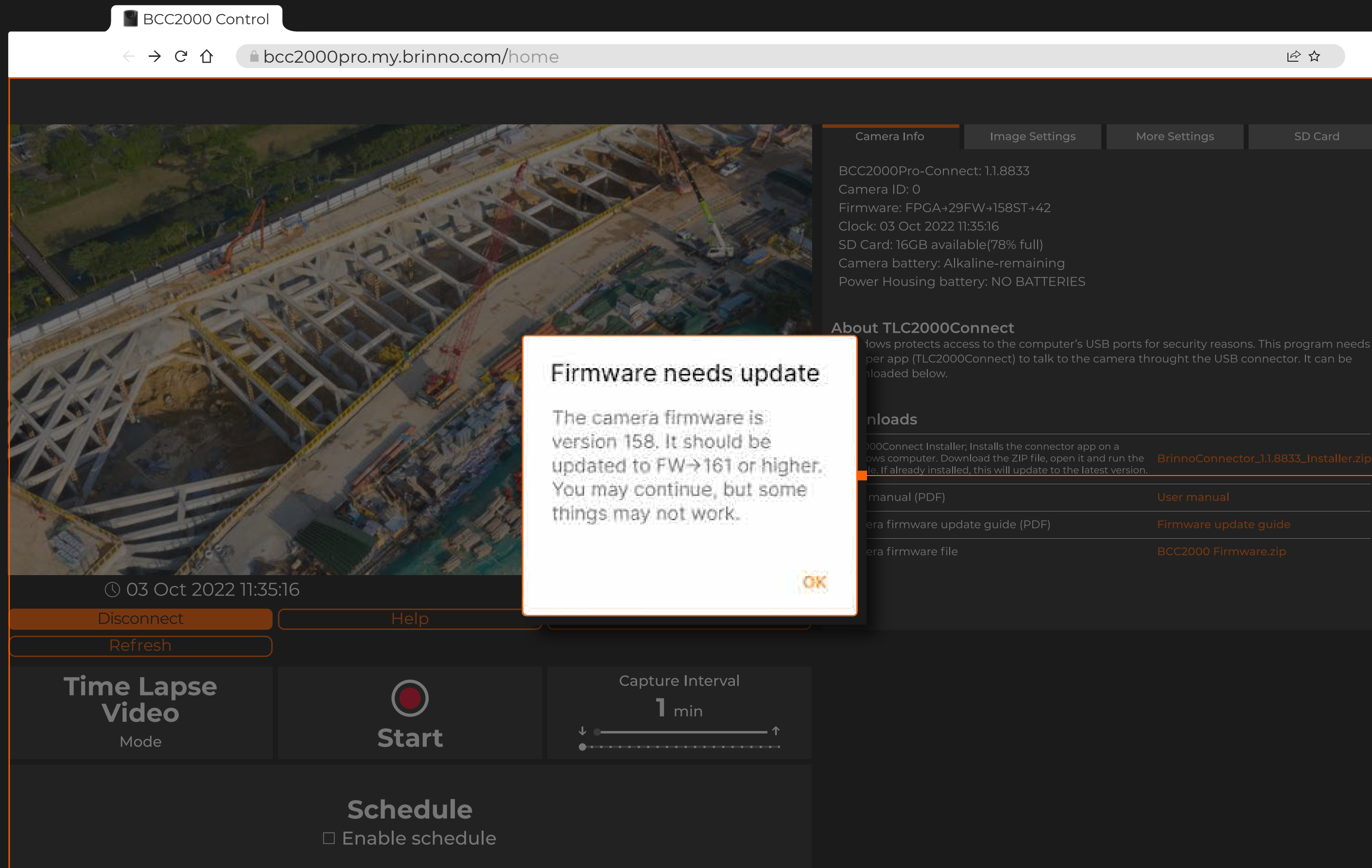
4-3. Click **“Connect”** to complete the camera’s connection.

Open the online Brinno Command Center and confirm the firmware version and feature updates.



Brinno Command Center step-by-step

15_19



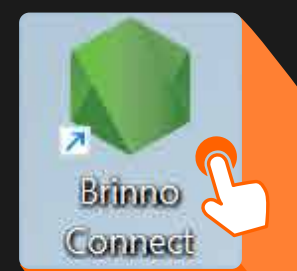
4-4.

While using an Internet connection, the online Brinno Command Center will detect whether the camera's firmware is the latest version. If it's not, there will be a pop up notification to tell you to update your firmware.

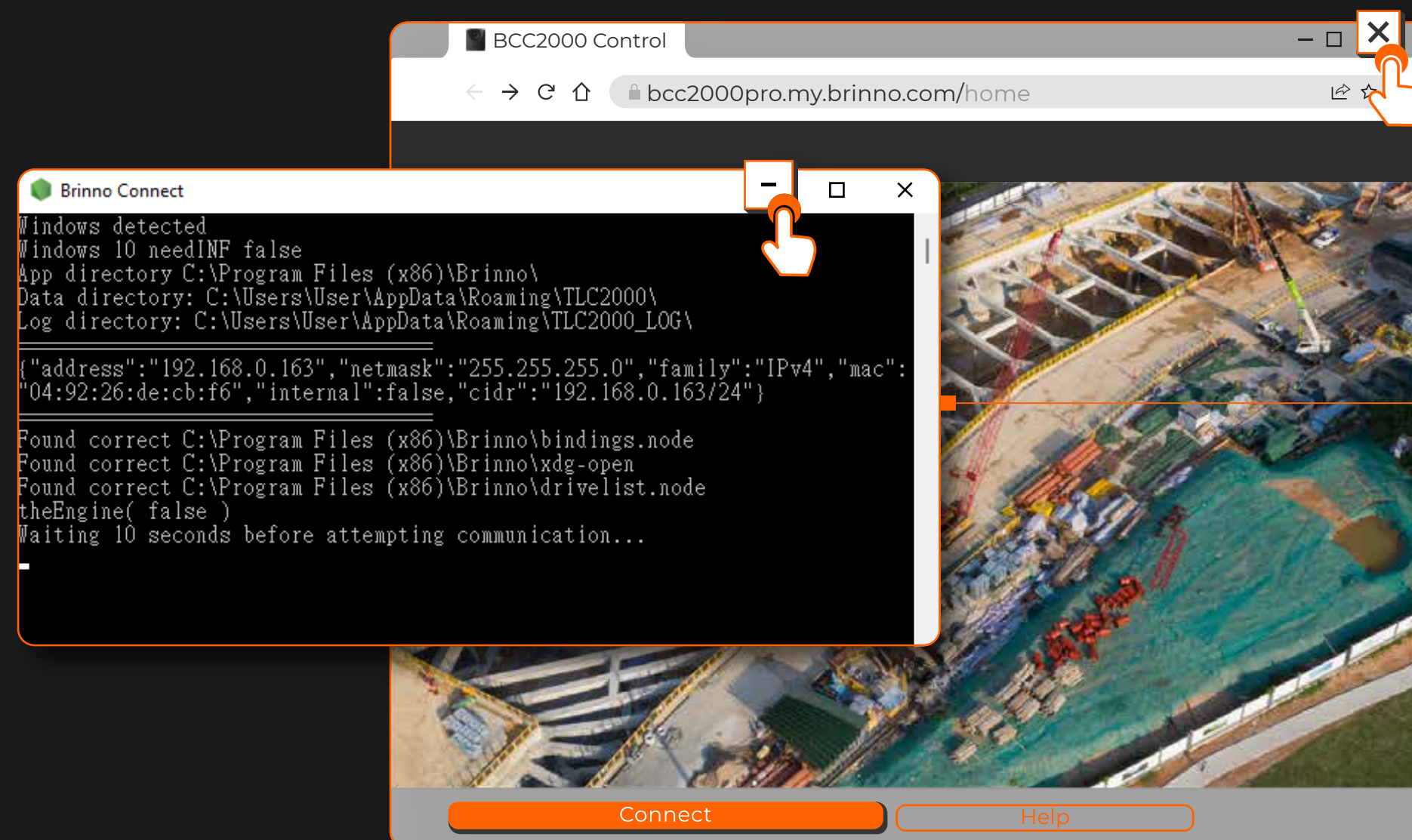
Go to the [TLC2000/TLC2020 support page](#) and download firmware in your desired language.



Without Internet Connection



Online Version

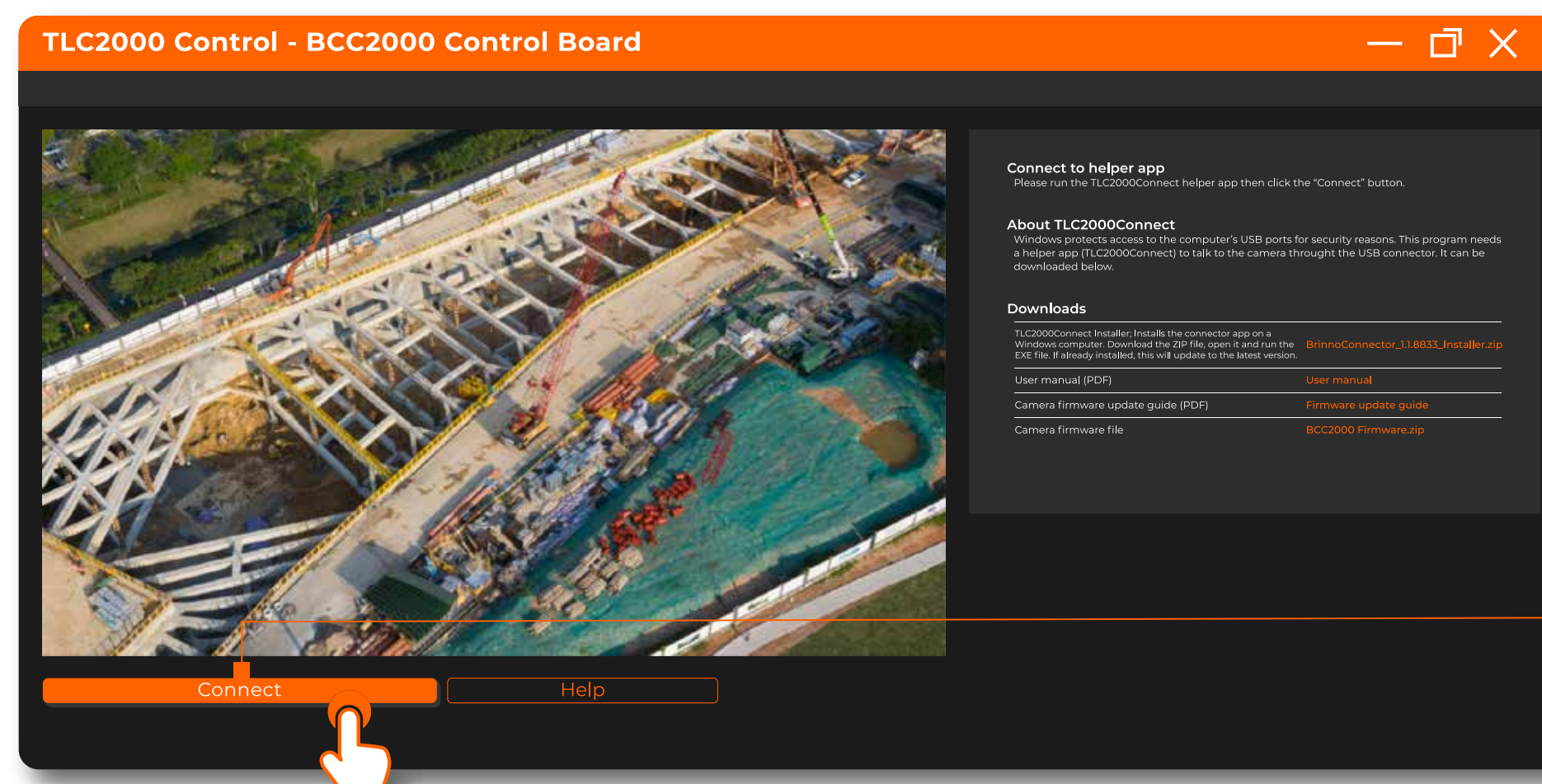


4-5.

Open the online Brinno Command Center, minimize the operational window and close the web browser.



Offline Version



4-6.

Open the offline Brinno Command Center and press **“connect”**.



Status

🕒 03 Oct 2022 11:35:16

💾 16GB(78%) 🔋 96%

Disconnect

Help

LiveView

Refresh

**Time Lapse
Video**
Mode



Capture Interval
1 min



Schedule

☐ Enable schedule

Capture Setting

Schedule Setting

Camera Info

Image Settings

More Settings

SD Card

BCC2000Pro-Connect: 1.1.8833
Camera ID: 0
Firmware: FPGA→29FW→158ST→42
Clock: 03 Oct 2022 11:35:16
SD Card: 16GB available(78% full)
Camera battery: Alkaline-remaining
Power Housing battery: NO BATTERIES

About TLC2000Connect

Windows protects access to the computer's USB ports for security reasons. This program needs a helper app (TLC2000Connect) to talk to the camera through the USB connector. It can be downloaded below.

Downloads

TLC2000Connect Installer; Installs the connector app on a Windows computer. Download the ZIP file, open it and run the EXE file. If already installed, this will update to the latest version.

[BrinnoConnector_1.1.8833_Installer.zip](#)

User manual (PDF)

[User manual](#)

Camera firmware update guide (PDF)

[Firmware update guide](#)

Camera firmware file

[BCC2000 Firmware.zip](#)

Other function tab



Appendix & Support



BCC2000Plus Construction Time Lapse Bundle

<https://brinno.com/construction-camera/BCC2000Plus>

Brinno Command Center

<https://brinno.com/support/support-center/Command-Center>

“More” Brinno Construction Time Lapse Camera

<https://brinno.com/construction-camera>

For more Brinno information:

Official Website <https://www.brinno.com/>

YouTube Channel <https://www.youtube.com/user/BrinnoInc/>

Twitter https://twitter.com/Brinno_Global

Facebook <https://www.facebook.com/BrinnoInc>

Instagram https://www.instagram.com/brinno_global/

