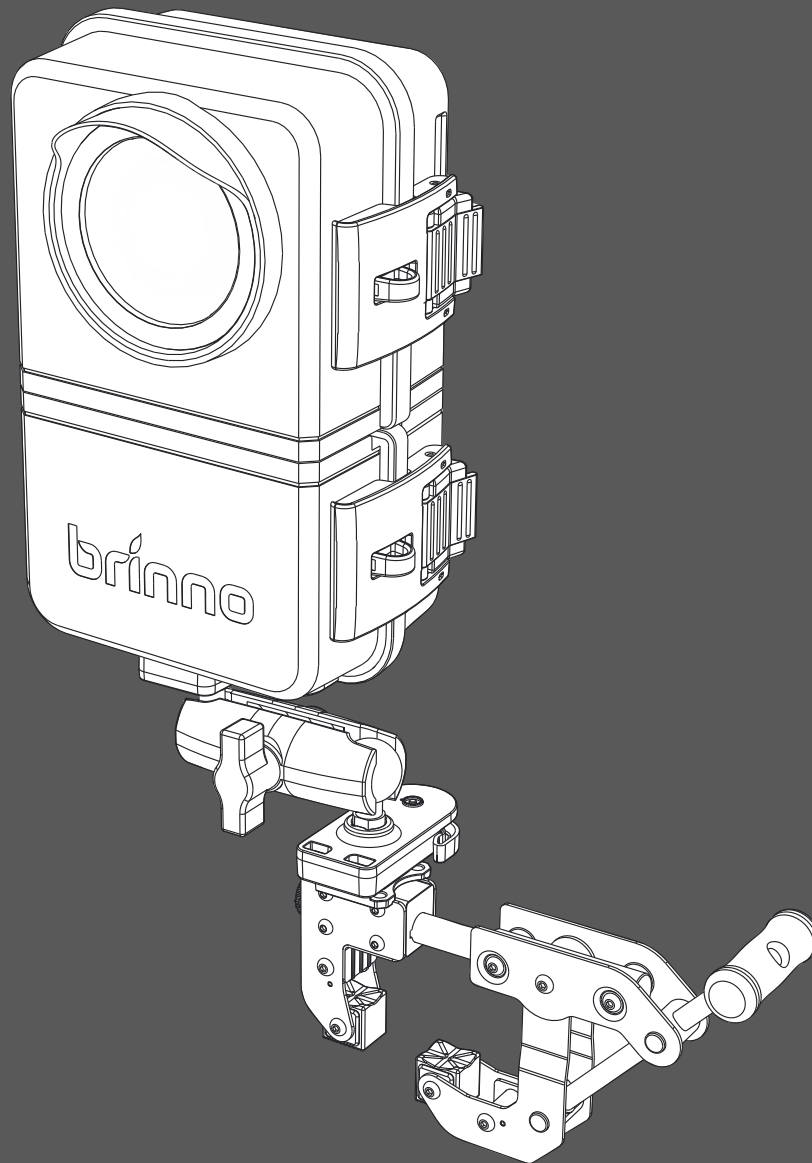


# Wi-Fi & 4K CONSTRUCTION TIME LAPSE CAMERA

BCC5000



User Manual

**brinno**  
*brilliant innovation*



# Contents

---

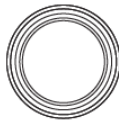
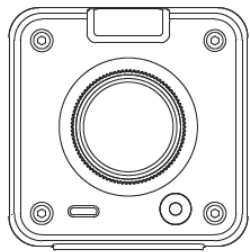
In the Box .....	5
Device Parts.....	7
LED Indicators .....	10
Initial Setup .....	12
Charge Before Use .....	13
Camera   Installing Battery Pack .....	14
Camera   MicroSD Card & Lens Hood .....	15
Housing   Installing Battery Pack .....	16
Housing   Installing Camera.....	17
Housing   Locking the Door .....	18
Clamp   Install Release Adapter .....	19
Operating Methods .....	27
Bluetooth Operation .....	30
Bluetooth   Home Page .....	31
Bluetooth   Camera Connect .....	32
Bluetooth   Camera Status.....	33
Bluetooth   Camera Settings .....	34
Bluetooth   Take a Photo (adjust camera view angle) .....	35
Bluetooth   Schedule Setting (daily & weekly recording schedule) .....	36
Bluetooth   Time Interval .....	37

Bluetooth	How to Start a Time Lapse Recording.....	38
Bluetooth	How to Check Camera Status During Recording .....	39
Bluetooth	Add Camera to Your Account.....	40
Bluetooth	Sign up/login Your Account.....	41
Bluetooth	Set Camera Wi-Fi.....	42
Bluetooth	Register Camera .....	43
Bluetooth	Register Completed.....	44
Wi-Fi Operation .....		46
Wi-Fi	Initial Page .....	47
Wi-Fi	Camera ID.....	48
Wi-Fi	Live View .....	49
Wi-Fi	Start/Stop Recording.....	50
Wi-Fi	Settings & Info.....	51
Settings	Schedule .....	52
Settings	Time Interval .....	53
Settings	Configure Settings.....	54
Settings	Battery Details.....	55
Settings	SD Card.....	56
Settings	About Camera .....	57
On-Camera Operation.....		59

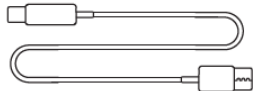
# In the Box

---

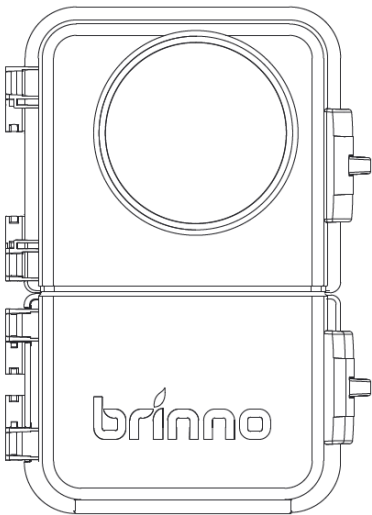
## 1. 4K Time Lapse Camera – TLC5000



- 1.1. Camera
- 1.2. Lens hood
- 1.3. USB-C cable
- 1.4. MicroSD card with adapter



## 2. Construction Power Housing – ATH5000

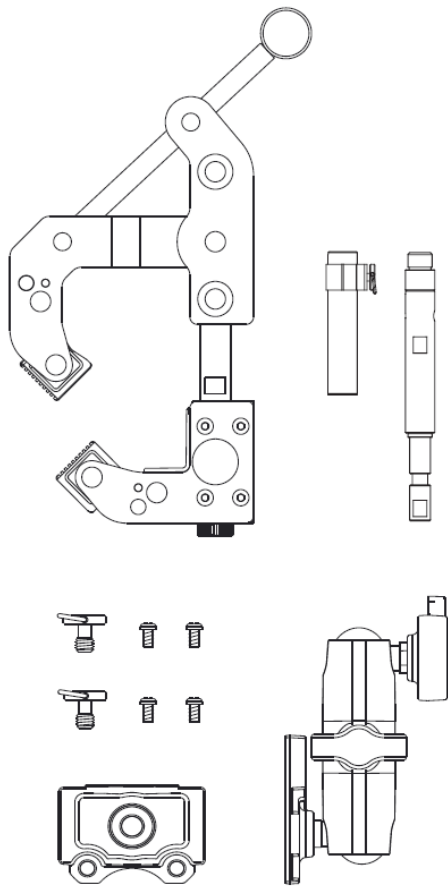


- 2.1. Camera protective housing
- 2.2. Extra battery slot
- 2.3. Camera mounting adapter (pre-install in the camera protective housing)

# In the Box

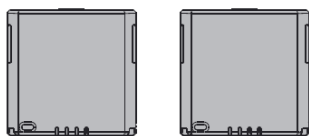
---

## 3. Camera Clamp Pro – ACC5000



- 3.1. Camera clamp
- 3.2. Extension poles
- 3.3. Magic arm
- 3.4. Quick release adapter
- 3.5. Screws

## 4. Battery Pack – MRB1000

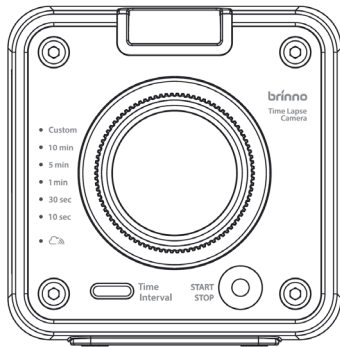


- 4.1. Rechargeable battery pack x2

# Device Parts

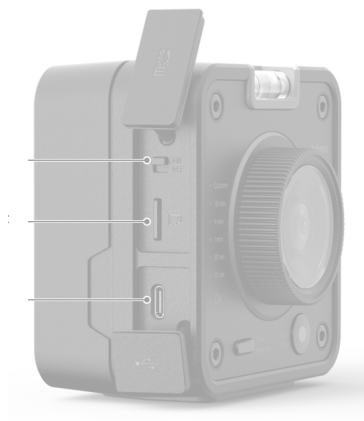
---

## 1. Camera



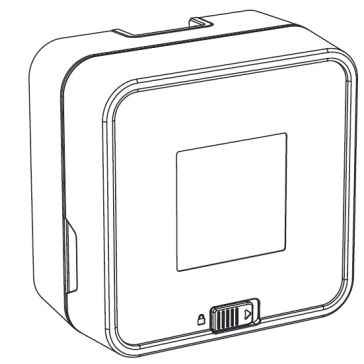
### FRONT

- 1.1. Spirit level
- 1.2. Lens
- 1.3. Start/stop button with LED indicator
- 1.4. Time interval button
- 1.5. Tripod mount (size: 1/4")



### 1.6. SIDE

- 1.7. Power switch
- 1.8. MicroSD card slot
- 1.9. USB-C socket
  - Charging battery (need to turn on camera power)
  - Power supply



### BACK

- 1.10. Battery cover
- 1.11. Cover lock
- Battery slot

# Device Parts

---

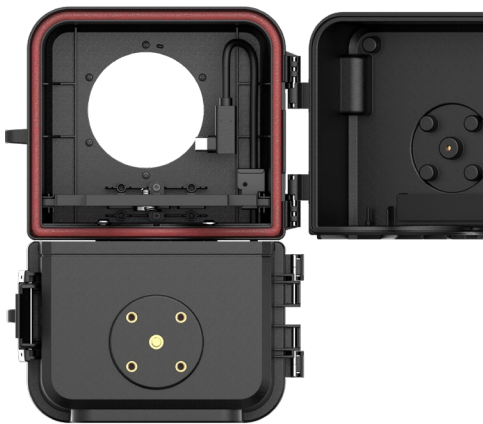
## 2. Construction Power Housing



FRONT SIDE

### FRONT SIDE

- 2.1. Extra battery slot x3
- 2.2. Battery lock
- 2.3. Power-in port (for solar power) (USB-C)
- 2.4. Data transfer port
- 2.5. Door & latch



BACK SIDE

### BACK SIDE

- 2.6. Camera mount adapter
- 2.7. External power connector (USB-C)
- 2.8. Door & latch
- 2.9. Tripod mount (size: 1/4")

# Device Parts

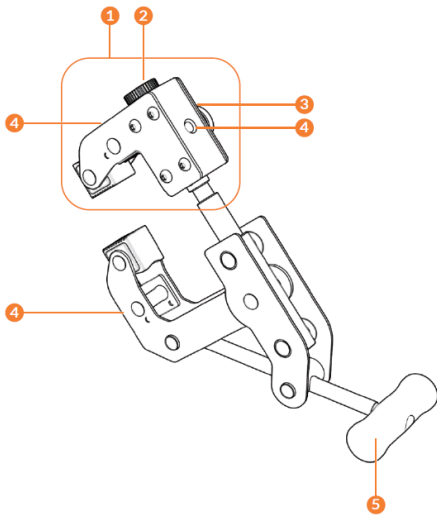
---

## 3. Camera Clamp Pro



### Magic Arm

- 3.1. Quick release adapter (for camera)
- 3.2. Flex arm knob
- 3.3. Clamp mount



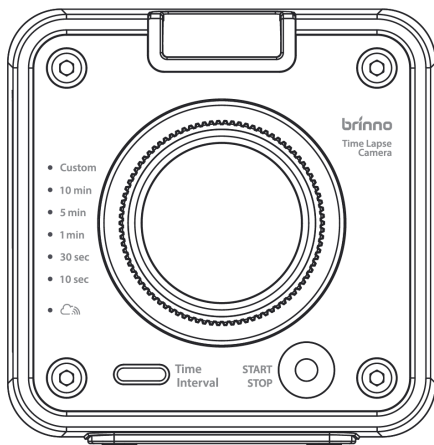
### Camera Clamp

- 4.1. Clamp head
- 4.2. Extension pole hole knob
- 4.3. Clamp head knob
- 4.4. Mounting hole (1/4") (x3)
- 4.5. Handle

# LED Indicators

---

## 1. Camera



### 1.1 Power/recording status

- GREEN

Solid: Power on

Blinking: Recording

- RED

Solid: No SD card,

Blinking: Low battery, low MicroSD card storage

### 1.2 Time interval

- GREEN

Solid: Indicated current time interval setting

### 1.3 Connection status

- BLUE

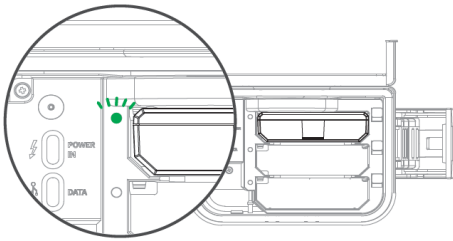
Solid: Camera connected to camera server

Blinking: Wi-Fi connecting

# LED Indicators

---

## 2. Construction Power Housing (Battery Slot)



When battery pack inserted:

LED lights on: standby

● Green: Battery capacity > 15%

● Red: Battery capacity < 15%

(recommended to charge battery pack)

LED blinking: Battery pack is currently powering the camera.

LED lights-off:

- Remaining battery capacity too low.
- Battery error.

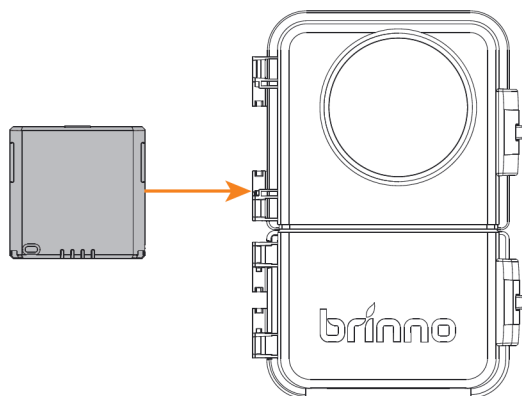
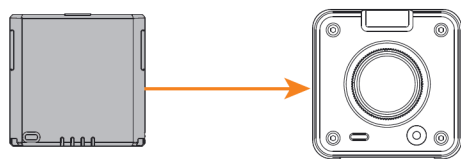
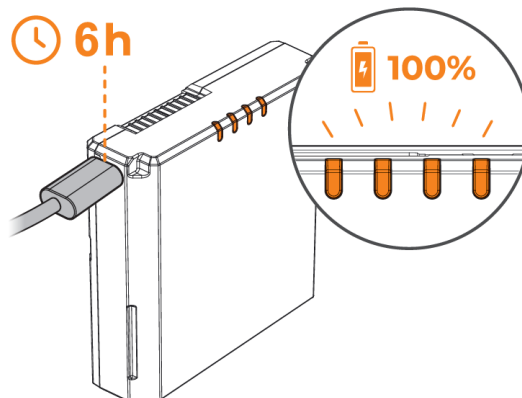
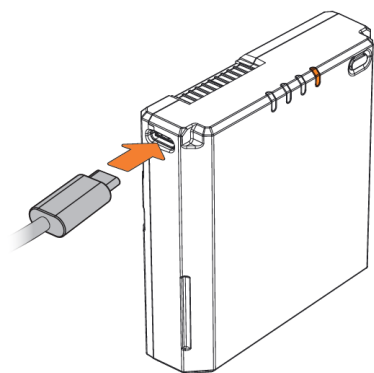
Please remove the battery pack and charge through an external DC adapter.

# Initial Setup

---

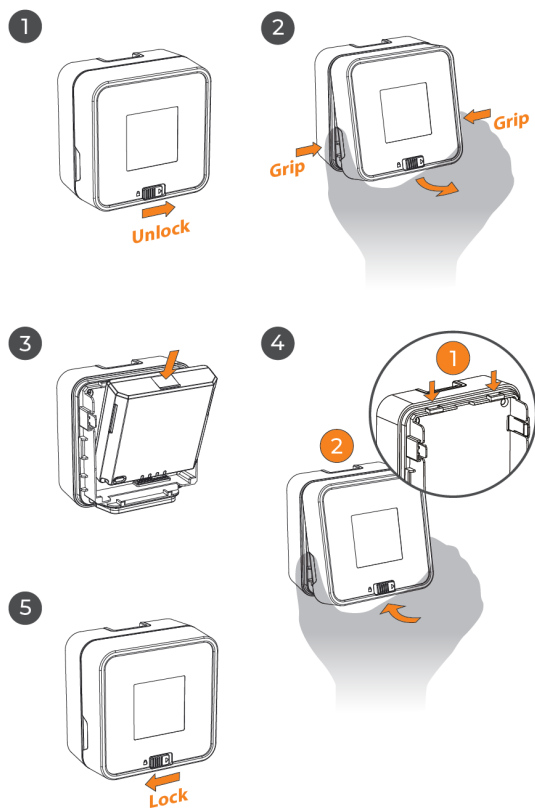
# Charge Before Use

---



# Camera | Installing Battery Pack

---



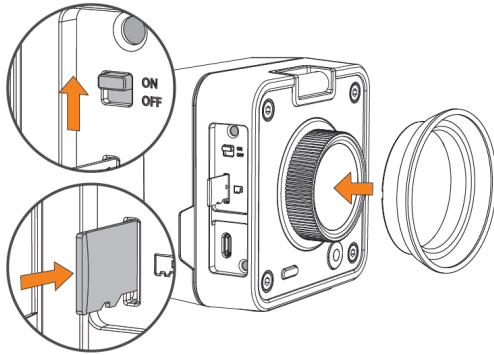
1. Unlock the battery cover.
2. Remove the battery cover.
3. Install battery pack.
4. Close the battery cover.
5. Lock the battery cover.

# Camera | MicroSD Card & Lens Hood

---

6

Open the microSD card cover

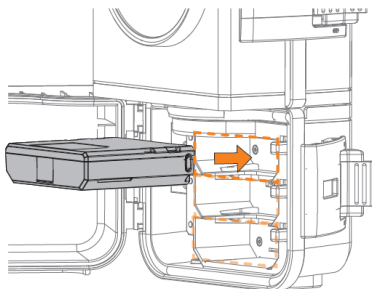


6. Insert lens hood.
7. Insert microSD card.
8. Turn on camera.

# Housing | Installing Battery Pack

---

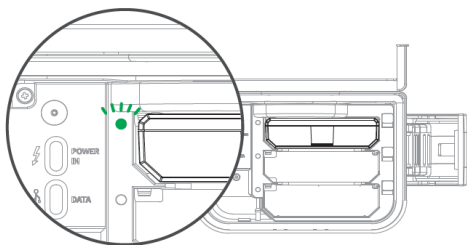
1



## Open Battery slot cover

1. Insert the battery pack included in the package\*.
2. Green LED lights on meaning the battery pack is installed correctly.
3. Lock the battery pack with battery lock.

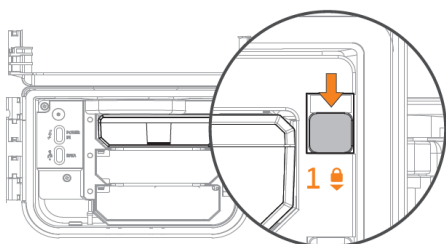
2



## Note:

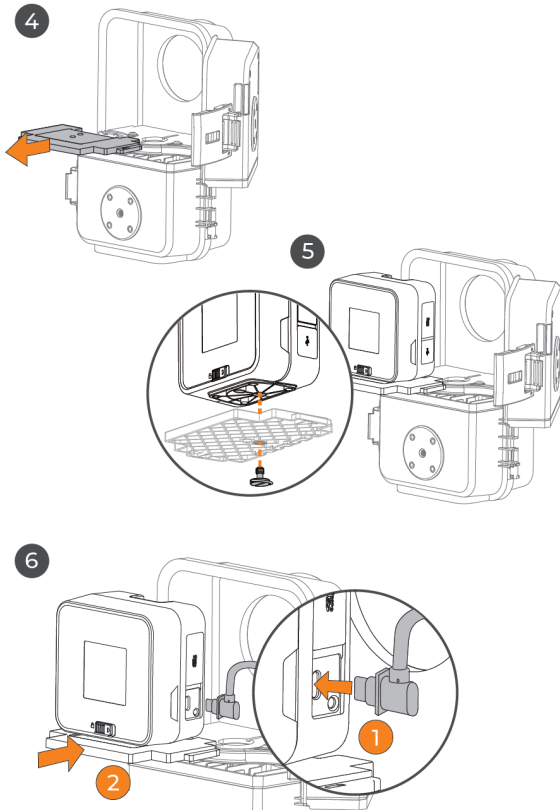
1. Fully charged before use.
2. Supports up to 3 battery packs in total.

3



# Housing | Installing Camera

---



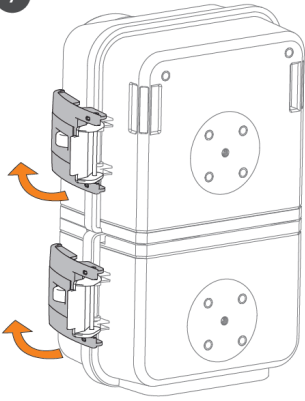
## Open CAMERA HOUSING cover

4. Remove the camera mounting adapter.
  5. Secure the camera and the adapter with the screw.
  6. Open the USB-C cover on the camera, and plug the external power connector into the camera.
- Then, insert the adapter with the camera attached back into the camera housing.

# Housing | Locking the Door

---

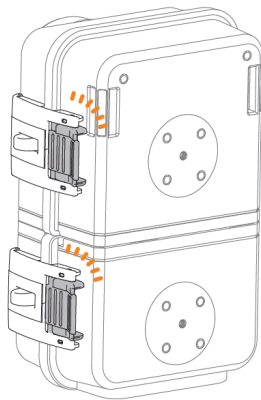
7



7. Secure the door of the housing.

8. Lock the latches, and a "click" sound means correctly installed.

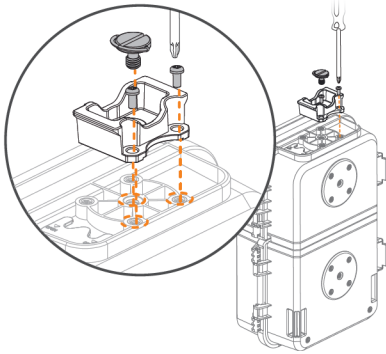
8



# Clamp | Install Release Adapter

---

1



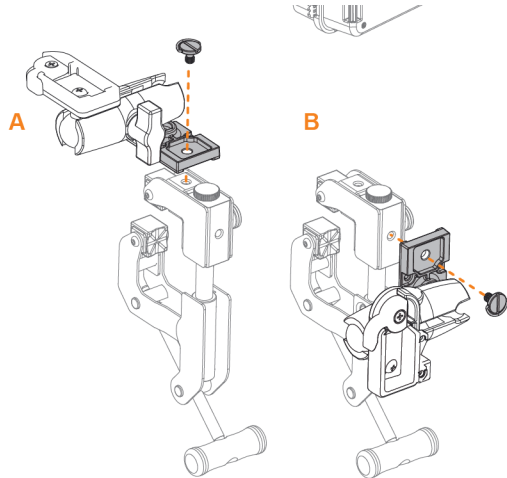
2

1. Remove the Quick Release adapter from the Magic Arm.
2. Install the Quick Release adapter to the Construction Power Housing with the big screw and two other small screws.

# Clamp | Assemble Magic Arm

---

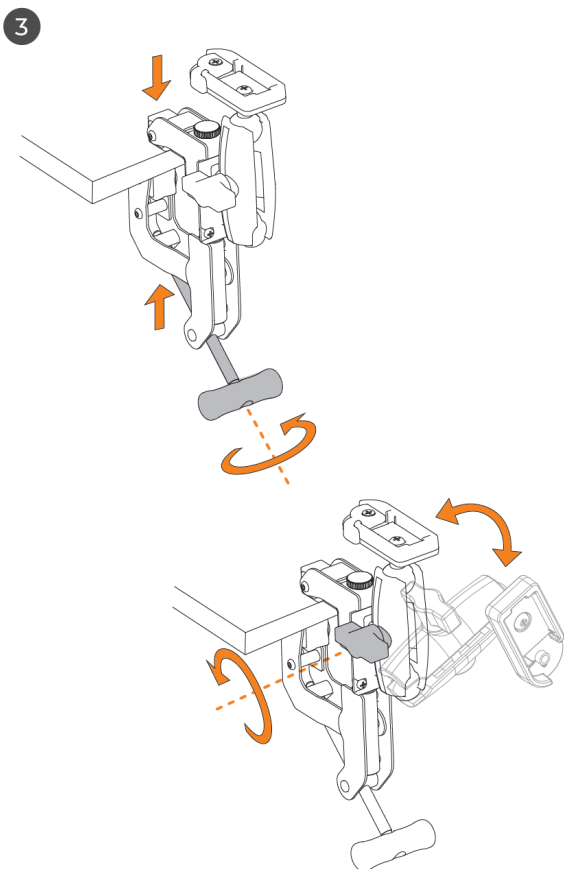
2



3. Install Magic Arm on the Camera Clamp

# Clamp | Assemble

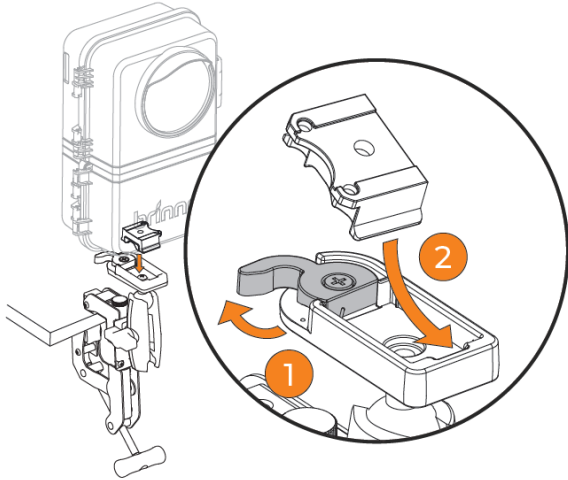
---



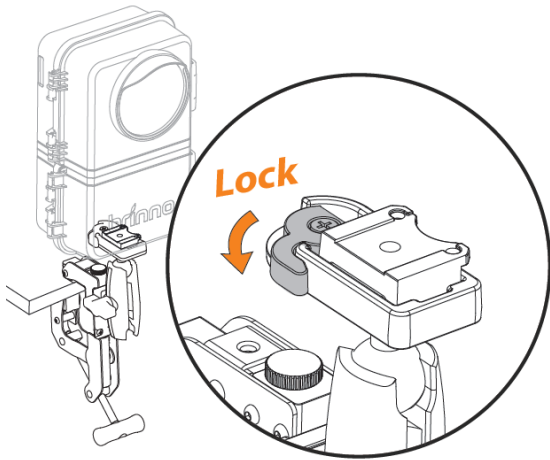
1. Attach Camera Clamp to a desired location, tightening the handle.
2. Adjust Magic Arm to a desired position.

# Clamp | Assemble Housing to Clamp

---

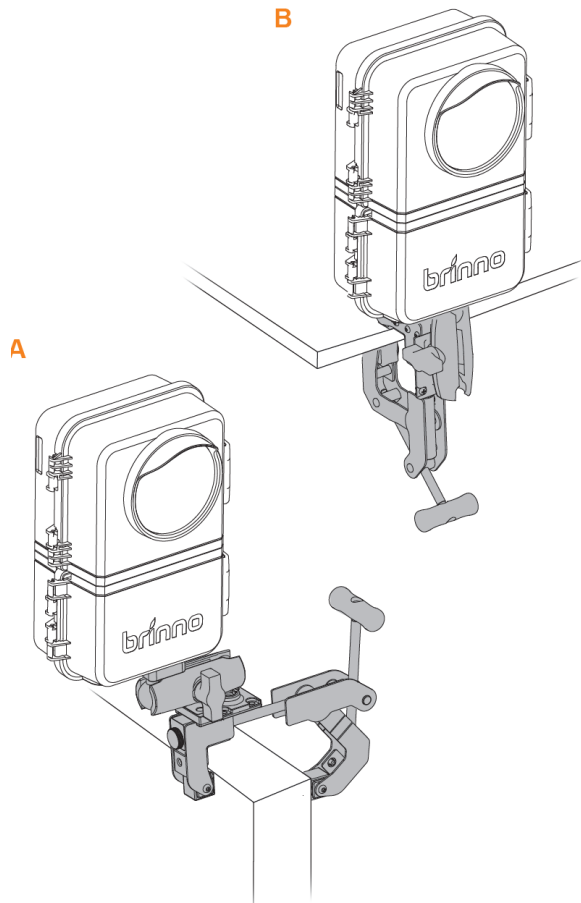


1. Loosen the locking switch.
2. Slide the Quick Release adapter at a tilted angle to secure it.
3. Lock the switch.



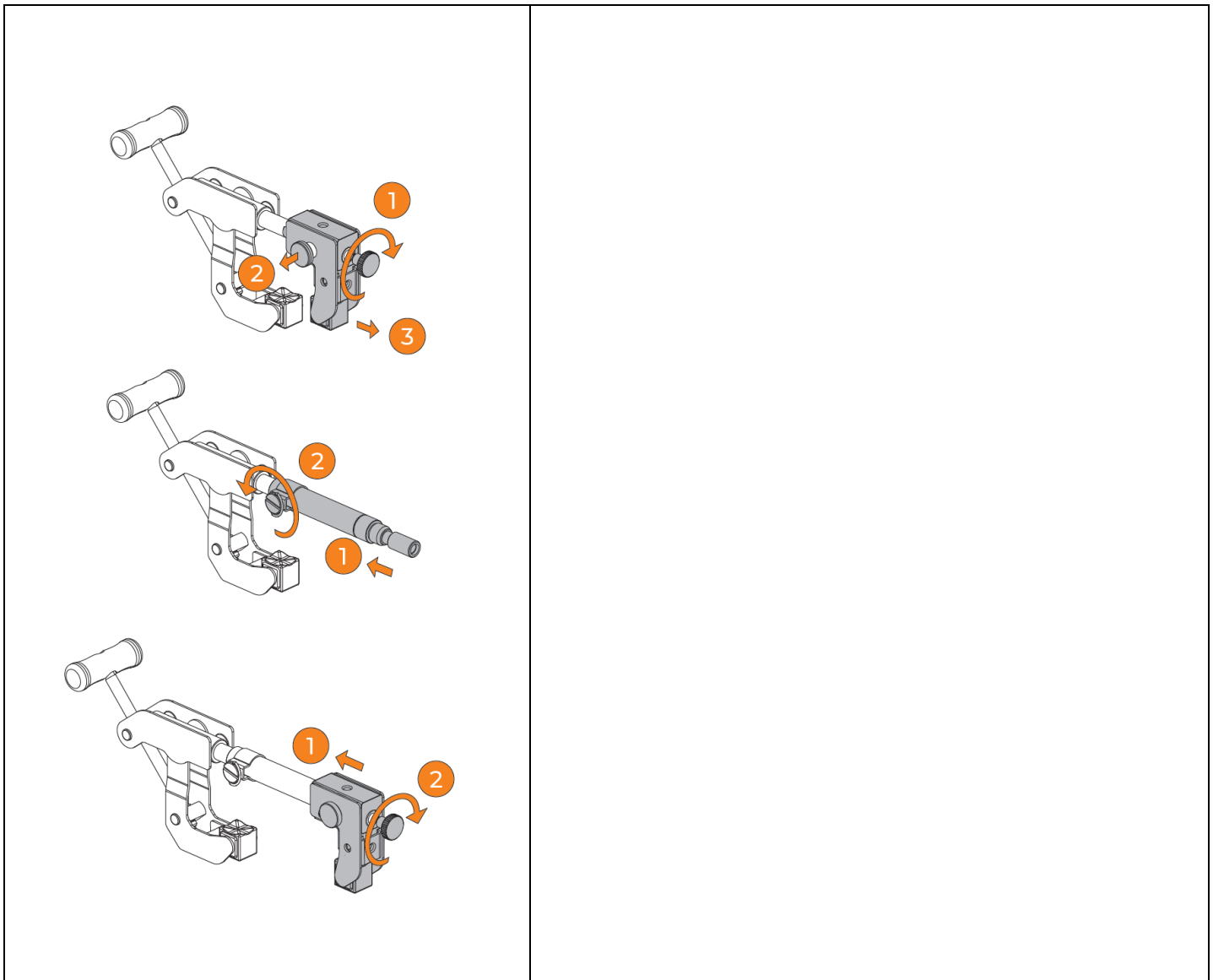
# Clamp | Find Your Desired Position

---

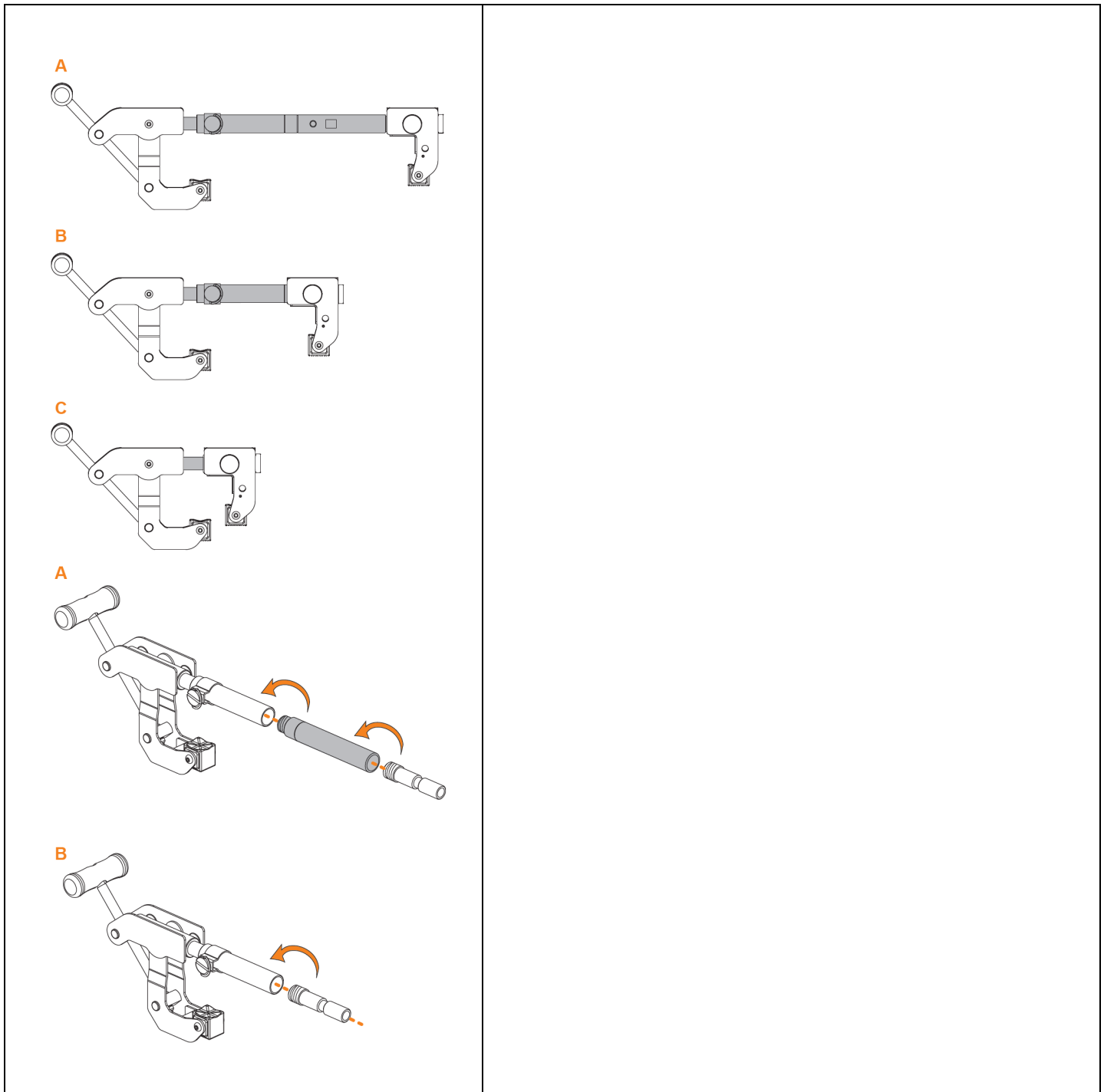


1. Adjust the whole set to find your desired position

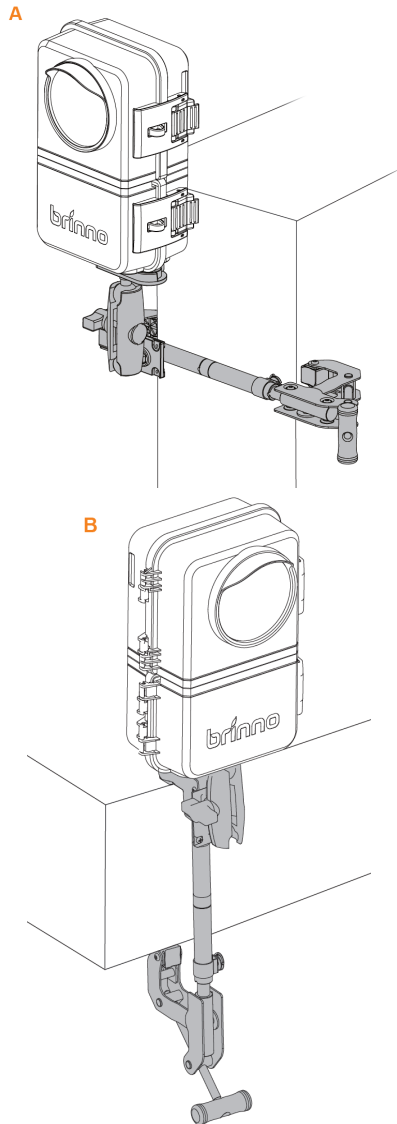
# Clamp | Install Extension Pole



# Clamp | Install Extension Pole



# Clamp | Install Extension Pole



# Operating Methods

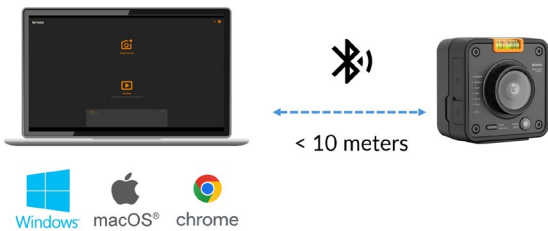
---

# 3 Operating Methods

---

The camera (TLC5000) can be operated through the following methods:

---



## 1. Bluetooth operation (initial setup, local control)

- Initial camera setup.
- Short-term project.
- Local control.
- Laptop or desktop.



[Bluetooth App \(CLICK HERE\)](#)



## 2. Wi-Fi operation (remote control)

- Completed Wi-Fi setting thru Bluetooth operation.
- Long-term project.
- Remote control.
- Phone, tablet, laptop or desktop.



[Wi-Fi Operating App \(CLICK HERE\)](#)



## 3. On-Camera operation

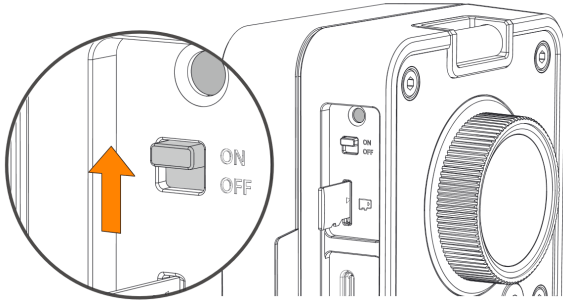
- Select desired time interval.
- Start/stop recording.

# Bluetooth Operation

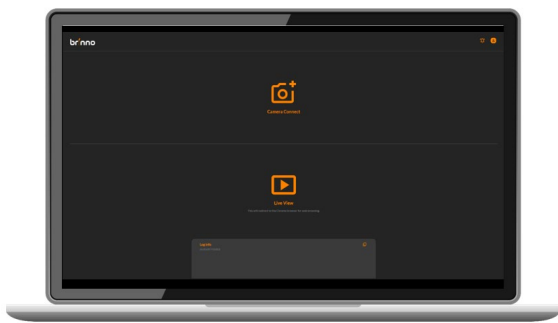
---

# Bluetooth Operation

---



Turn on the camera.



Using Google Chrome to access the following web app on your laptop or desktop\*.

 [Bluetooth app \(CLICK HERE\)](#)

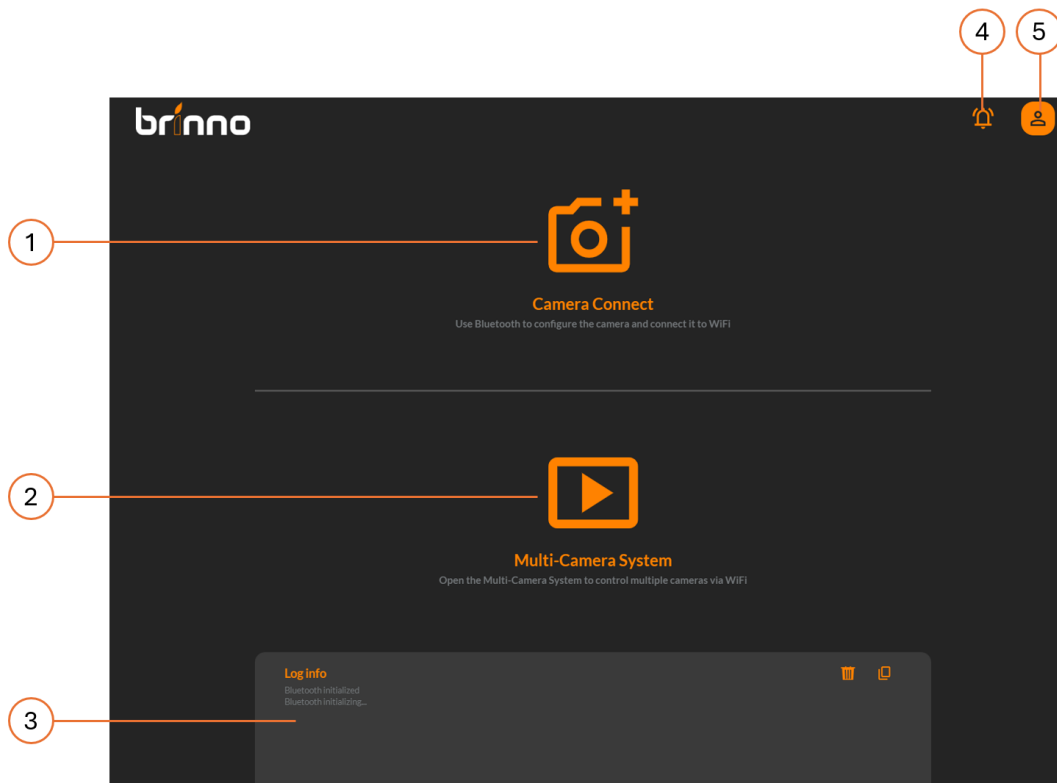
**Note: Make sure Bluetooth function on your laptop or desktop is enabled.**



Requirements:

- Laptop or desktop with Bluetooth function
- Operating system: Windows or macOS
- Web browser: Google Chrome
- Connecting range: Within 10 meters.

# Bluetooth | Home Page



## 1. Camera Connect

Connect camera through Bluetooth (BLE) for initial setup.

## 2. Multi-Camera System

Once the camera is connected to camera server through Wi-Fi, you can manage your cameras remotely.

## 3. Log info

Display all camera log info for internal analytics.

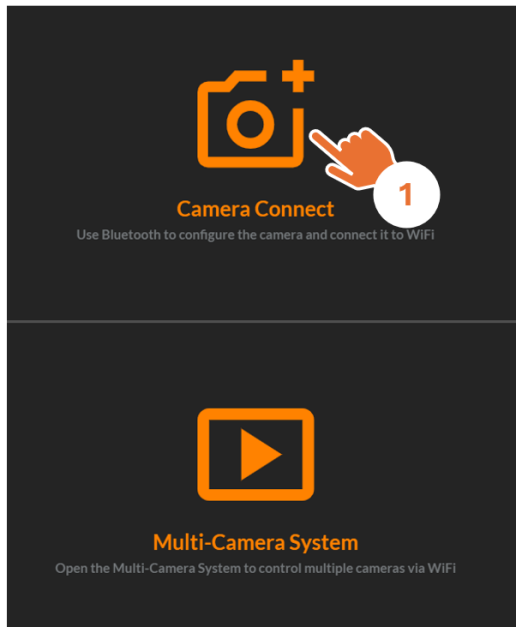
## 4. Notifications

Display all notifications.

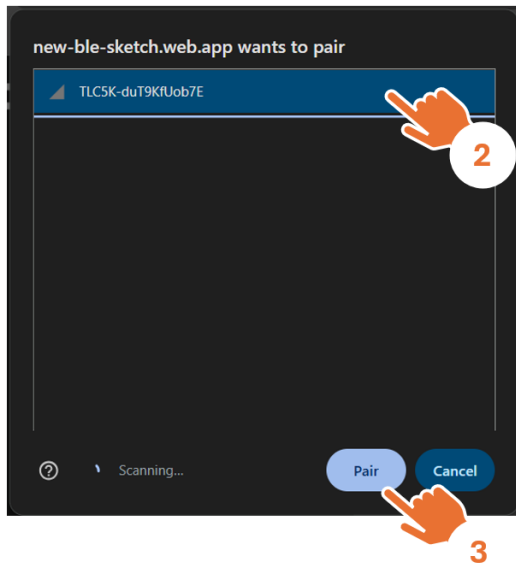
## 5. Account Setting

Login/sign up, push notifications, language setting, help center.

# Bluetooth | Camera Connect



1. Click **Camera Connect**.

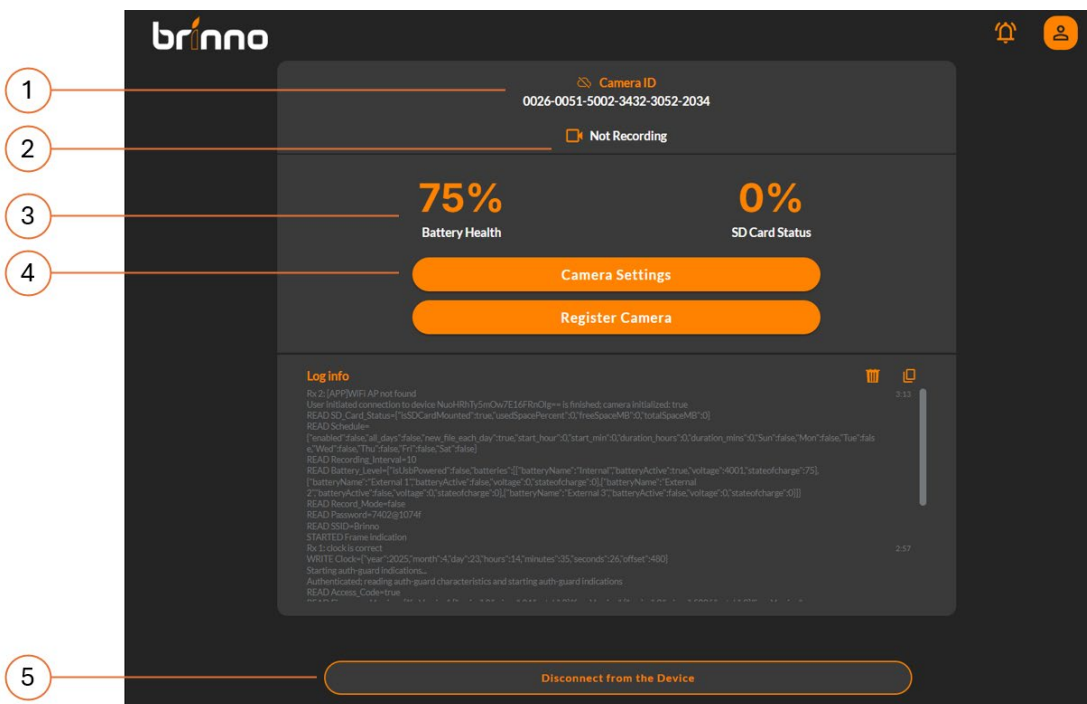


2. Find the camera with the unique **Bluetooth ID**.

\*Every camera has a unique Bluetooth ID.

3. Click **Pair**.

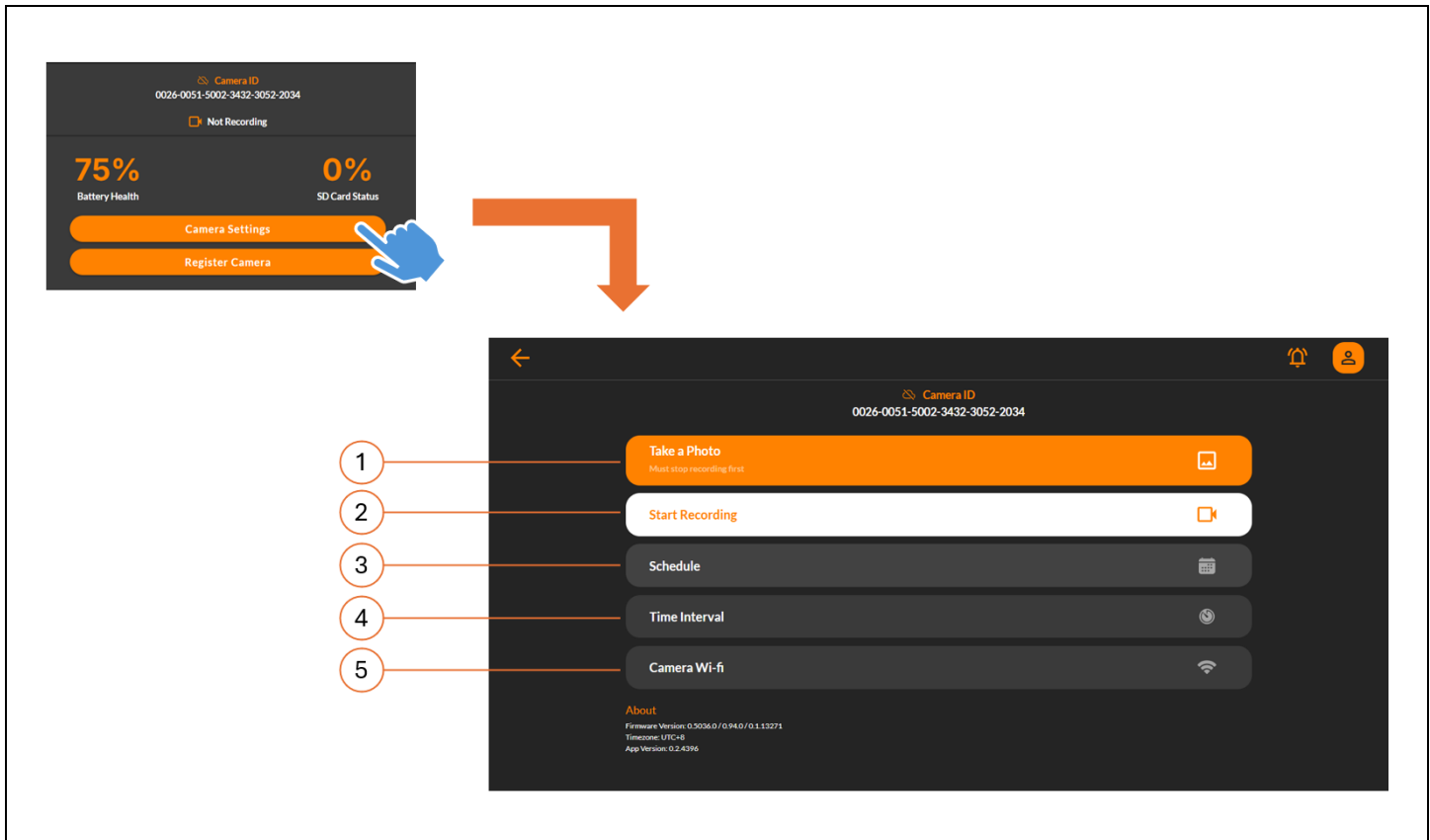
# Bluetooth | Camera Status



Once connected via Bluetooth, the browser will display the camera status.

1. Camera ID
2. Camera recording status
3. Camera battery & SD card capacity
4. Camera settings
5. Disconnect camera

# Bluetooth | Camera Settings



Click **Camera Settings**, go to setting page:

## 1. Take a Photo

The camera will send one photo through Bluetooth.

## 2. Start Recording

Start/stop recording with Bluetooth app.

## 3. Schedule Setting

Set daily & weekly capture schedule.

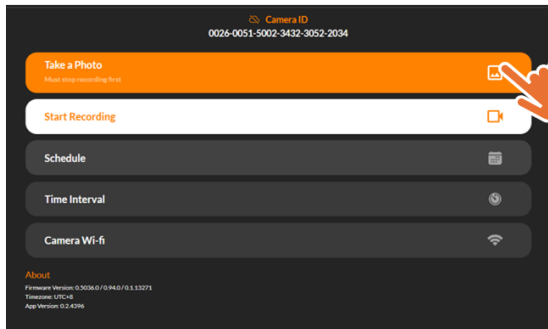
## 4. Time Interval

Set time interval.

## 5. Camera Wi-Fi

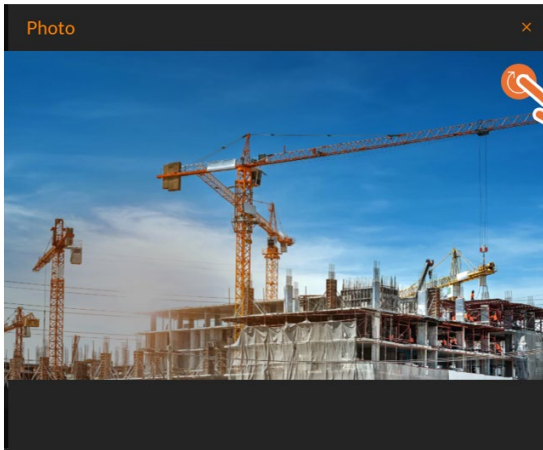
Setup Wi-Fi connection to the camera for remote control.

# Bluetooth | Take a Photo (adjust camera view angle)



## 1. Click *Take a Photo*.

Camera instantly captures the present frame and sends to Bluetooth app.



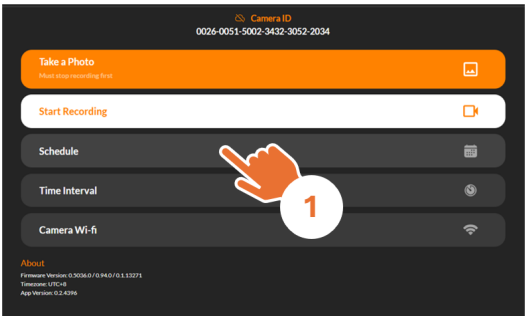
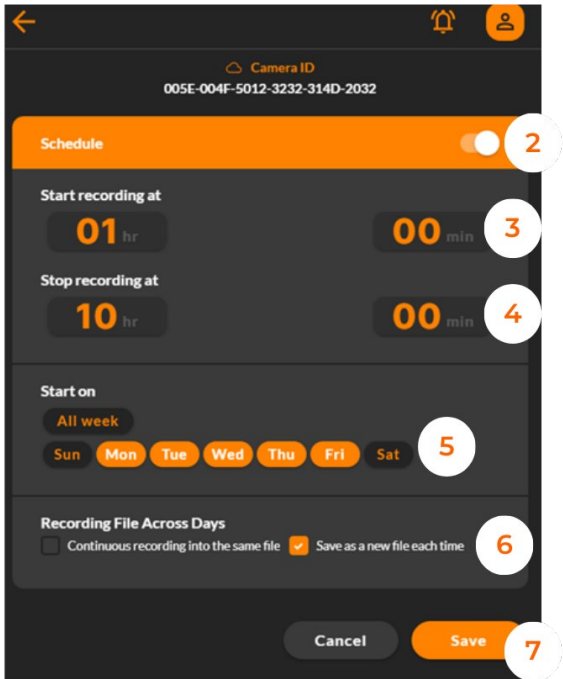
## 2. Check camera view angle.

Adjust camera view angle, and click **Reload** to receive updated frame.

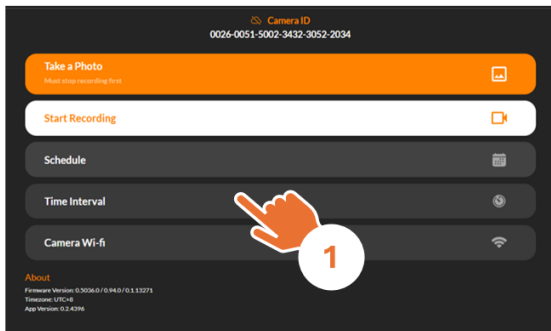
### Note:

**Take a Photo is unavailable when the camera is recording**

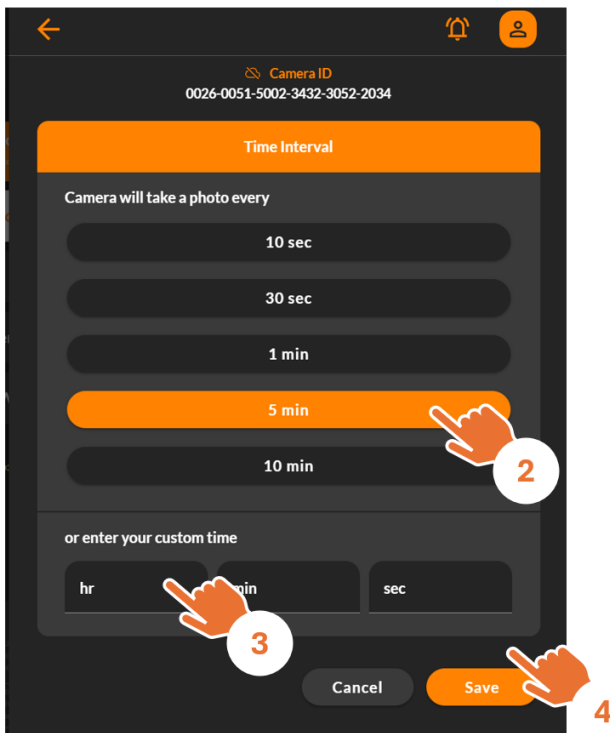
# Bluetooth | Schedule Setting (daily & weekly recording schedule)

	<ol style="list-style-type: none"><li>1. Click <i>Schedule</i>.</li></ol>
	<ol style="list-style-type: none"><li>2. Enable/disable Schedule.</li><li>3. Select <i>Start Recording Time</i></li><li>4. Decide <i>Start Recording Time</i></li><li>5. Schedule Days Select desired recording days of week.</li><li>6. File Split<ul style="list-style-type: none"><li>- <b>Continuous:</b> Camera will automatically combine several days of recording into a single file.</li><li>- <b>Daily:</b> Every daily recording produces a single <b>daily video file</b>.</li></ul><p>*File exceeding 500mb will be split into multiple files.</p></li><li>7. Click <i>Save</i> to save settings</li></ol>

# Bluetooth | Time Interval

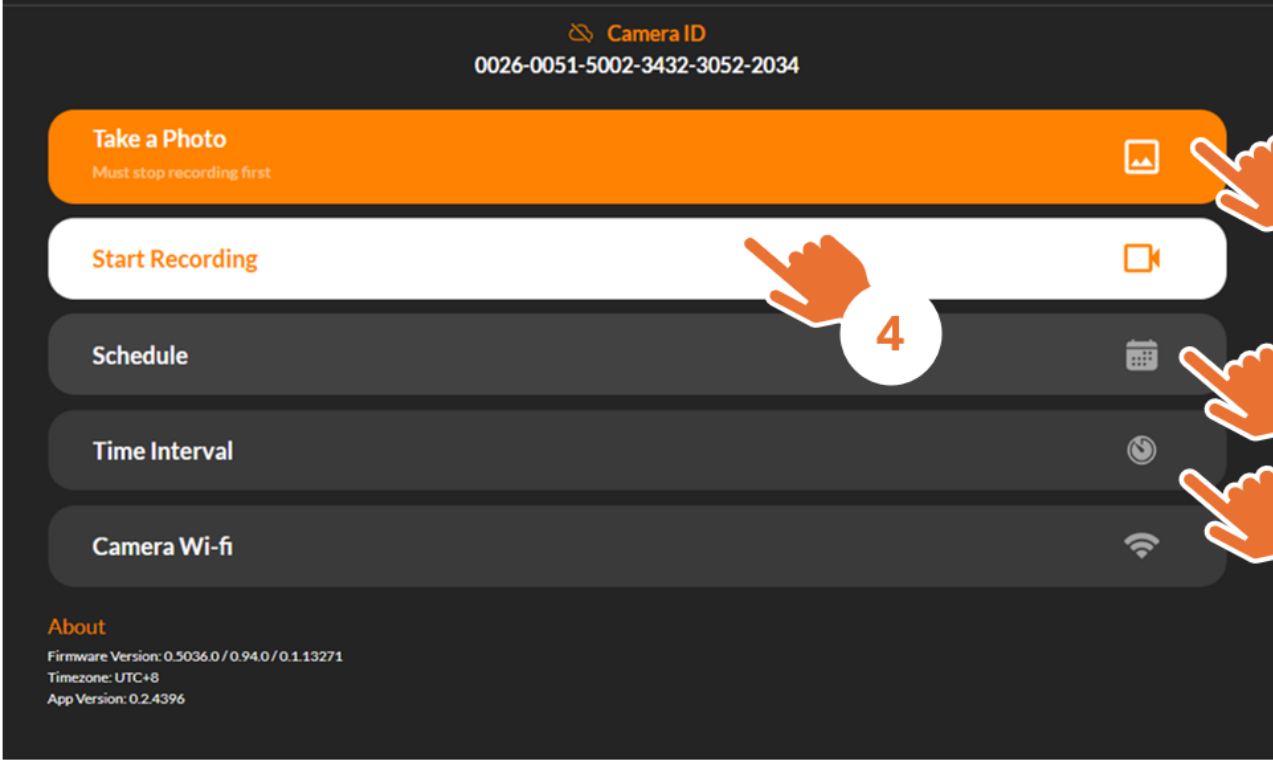


1. Click *Time Interval* Setting.



2. Select desired time interval, or customize time interval according to your need.  
3. Click *Save* to save settings

# Bluetooth | How to Start a Time Lapse Recording

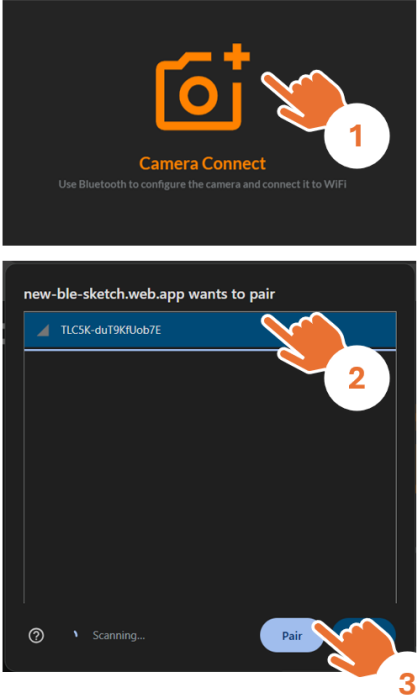
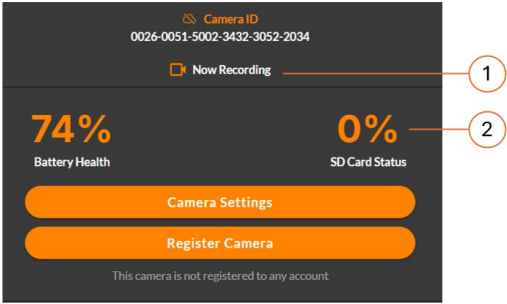


The screenshot shows a dark-themed control interface for a camera. At the top, it displays 'Camera ID' and a long alphanumeric string. Below this are five main buttons: 'Take a Photo' (orange), 'Start Recording' (white), 'Schedule' (dark grey), 'Time Interval' (dark grey), and 'Camera Wi-fi' (dark grey). Each button has a corresponding icon on the right. Four orange hand icons with numbers 1, 2, 3, and 4 indicate the sequence of actions: 1 points to 'Take a Photo', 2 points to 'Schedule', 3 points to 'Time Interval', and 4 points to 'Start Recording'. At the bottom left, there is an 'About' section with firmware, timezone, and app version information.

1. Take a photo to confirm camera view angle.
2. Set daily & weekly recording schedule.
3. Set desired time interval.
- 4 Start your time lapse recording.

**Note:**  
To access the recorded video file, visit the Wi-Fi Operating App for download.

# Bluetooth | How to Check Camera Status During Recording

	<p>Go to <a href="#">Bluetooth app (CLICK HERE)</a></p> <ol style="list-style-type: none"><li>1. Click <i>Camera Connect</i>.</li><li>2. Find the camera with the unique Bluetooth ID.</li><li>3. Click <i>Pair</i> button.</li></ol>
	<p>At Camera Status page</p> <ol style="list-style-type: none"><li>1. Indicate the camera is recording.</li><li>2. Check battery &amp; SD card capacity</li></ol>

# Bluetooth | Add Camera to Your Account

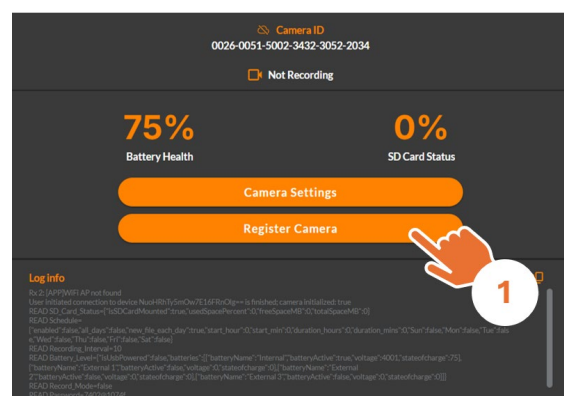
Adding a camera to your account means you can remote control all your cameras, it will require two steps:

**Step 1. Sign up/login to your account.**

**Step 2. Setup Wi-Fi connection to the camera.**

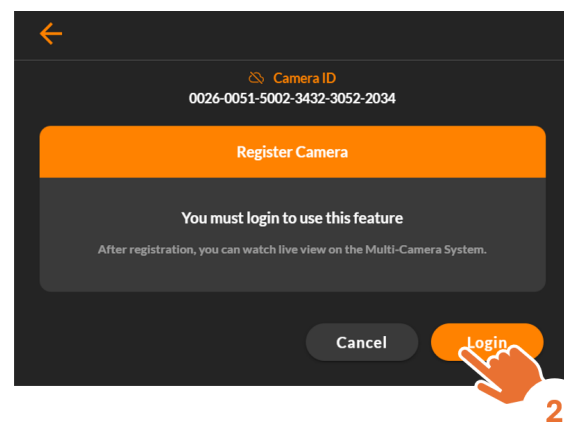
## Note:

**At this process, your laptop/desktop & camera need to connect to a stable Wi-Fi.**



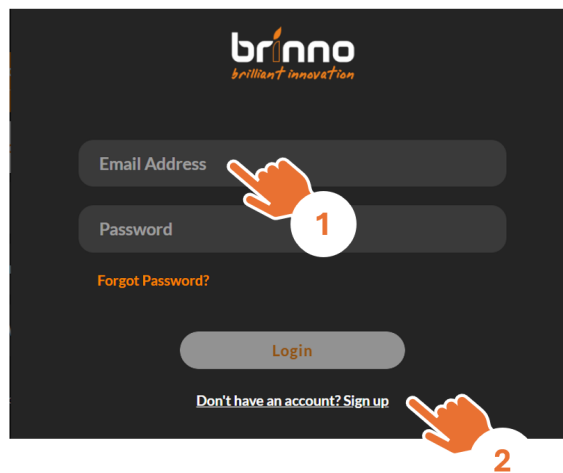
After connecting the camera through Bluetooth.

**1. Click *Register Camera*.**

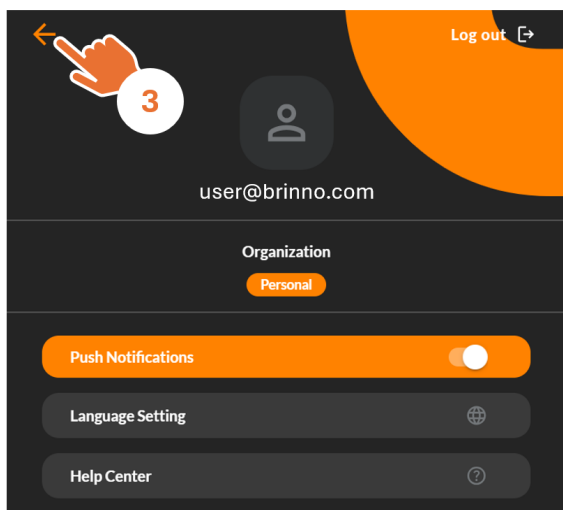


**2. Sign up/login your account.**

# Bluetooth | Sign up/login Your Account

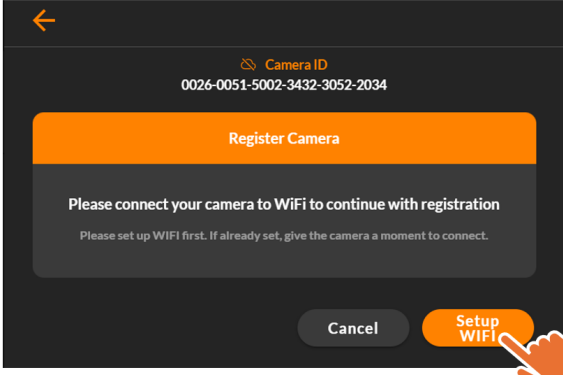

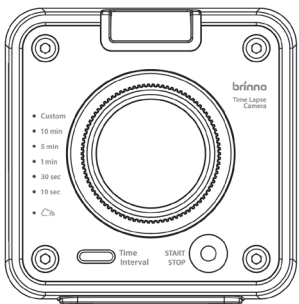


1. Login: If you already have an account.
2. Sign up: Create a new account.

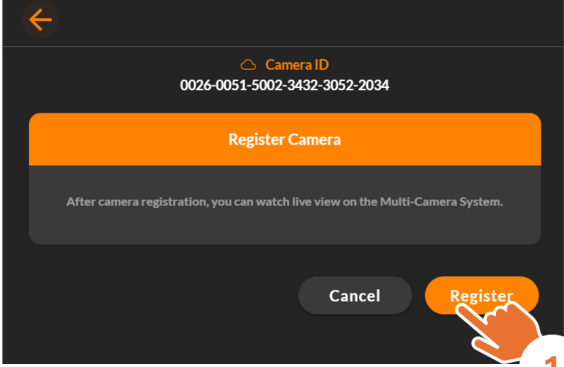
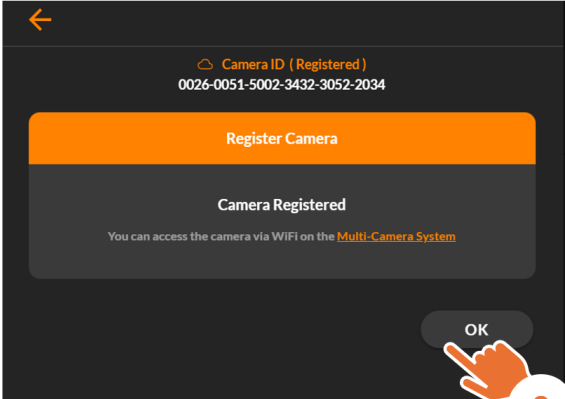


3. After completed account login/sign up, return to register camera page.

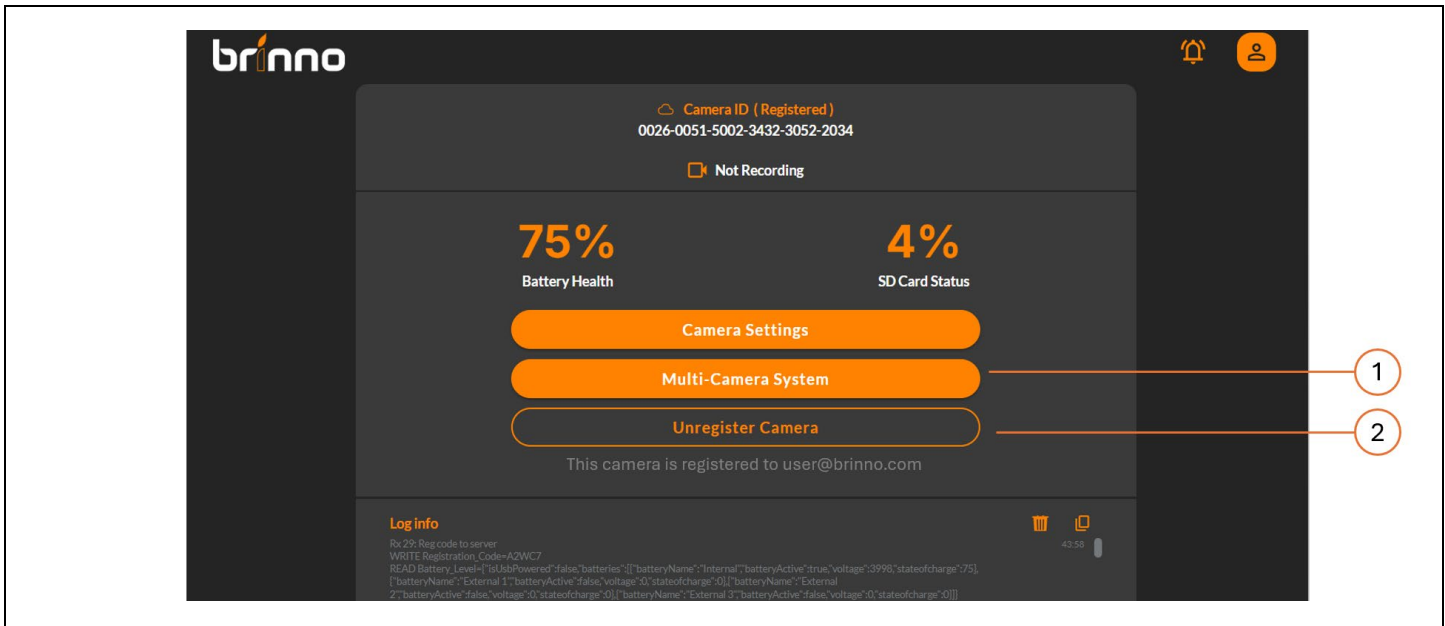
# Bluetooth | Set Camera Wi-Fi

	<p><b>At Register Camera Page</b></p> <ol style="list-style-type: none"><li>1. Click <i>Setup Wi-Fi</i>.</li></ol>
	<ol style="list-style-type: none"><li>2. Enter your Wi-Fi name (SSID) &amp; password. <b>Note: Please ensure your Wi-Fi supports 2.4 GHz or Dual (2.4/ 5 GHz) frequency bands.</b></li><li>3. Select <i>Remember my account</i>.</li><li>4. Click <i>Save</i> to save settings.</li></ol>
	<p><b>The Blue LED blinks while connecting to Wi-Fi, and turns solid when the connection completes.</b></p>

# Bluetooth | Register Camera

	<p><b>While camera is connected to Wi-Fi</b></p> <ol style="list-style-type: none"><li>1. Click <i>Register</i>.</li></ol>
	<ol style="list-style-type: none"><li>2. Camera Registered.</li></ol>

# Bluetooth | Register Completed



Once the camera is registered, you can use the following functions:

## 1. Multi-Camera System

Remote control all your registered cameras through Brinno cloud platform.

## 2. Unregister Camera

Remove the registered camera from your account.

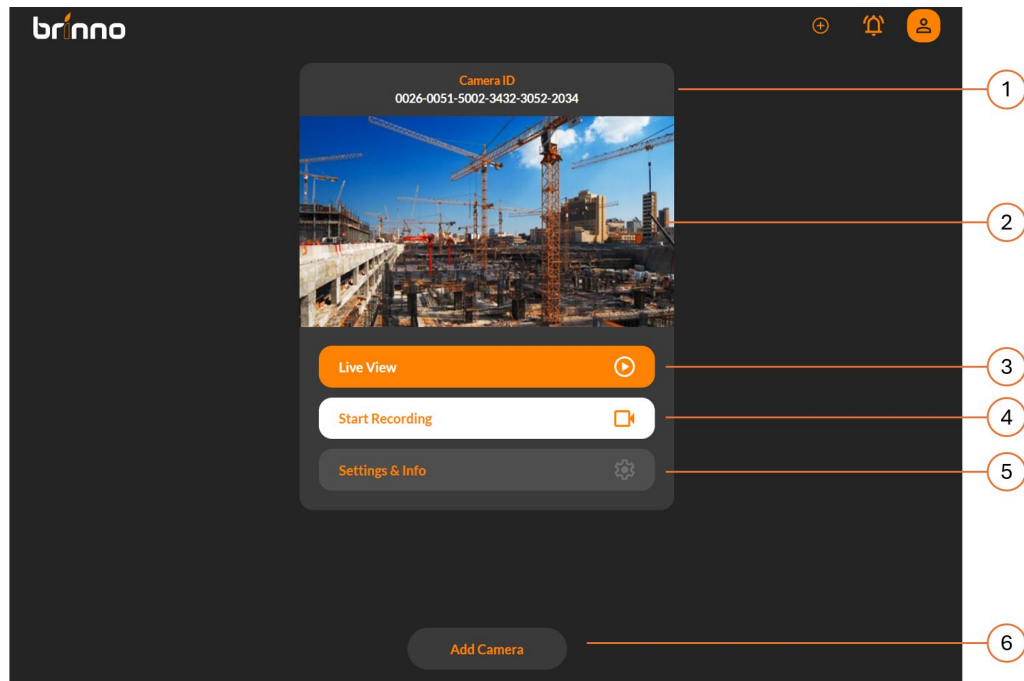
# Wi-Fi Operation

---

# Wi-Fi Operation

	<p><b>Mount construction camera at desired position.</b></p>
	<p><b>Using any browser to access the following web app on your mobile devices, laptop or desktop.</b></p> <p> <a href="#">Wi-Fi Operating App (CLICK HERE)</a></p> <p><b>Note:</b></p> <p><b>Make sure all devices are connected to Wi-Fi or LTE.</b></p>

# Wi-Fi | Initial Page



At Multi-Camera System home page [Wi-Fi Operating App \(CLICK HERE\)](#)

**1. Camera ID**

Camea unique ID.

**2. Live view Screen**

Displays the live stream from the camera.

**3. Live View Button**

Activate the live view mode.

**4. Start/stop Recording**

Start or stop a time lapse project recording.

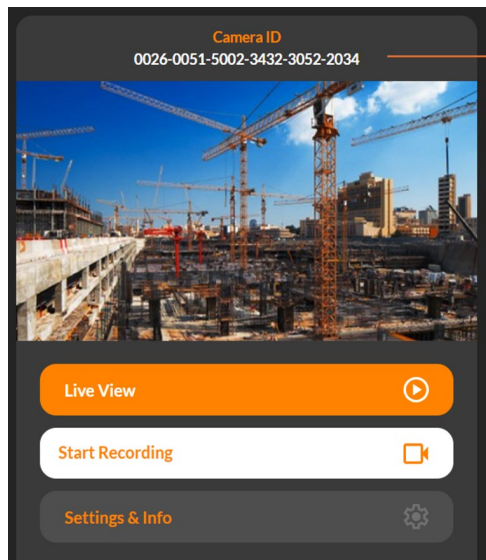
**5. Camera Setting & Info**

Access and adjust camera settings, check battery level, manage SD card storage, and update camera firmware.

**6. Add Camera**

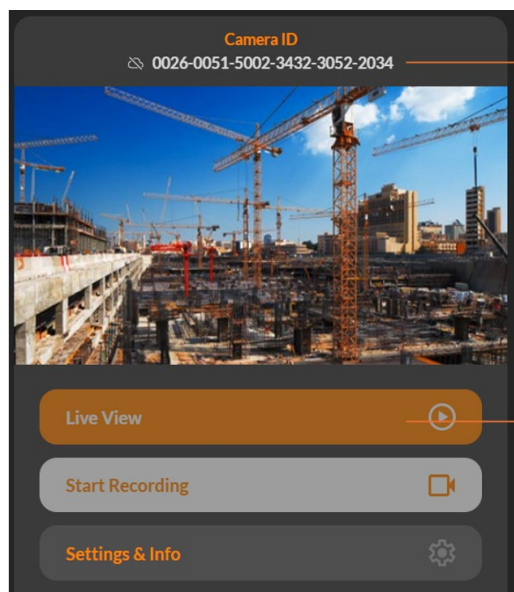
Add additional cameras to your account (Redirect to **Bluetooth Operation** web page).

# Wi-Fi | Camera ID




## 1. Camera ID

Each camera has a unique Camera ID, which can also be found on the label included in the package.



## 2. Connection Status

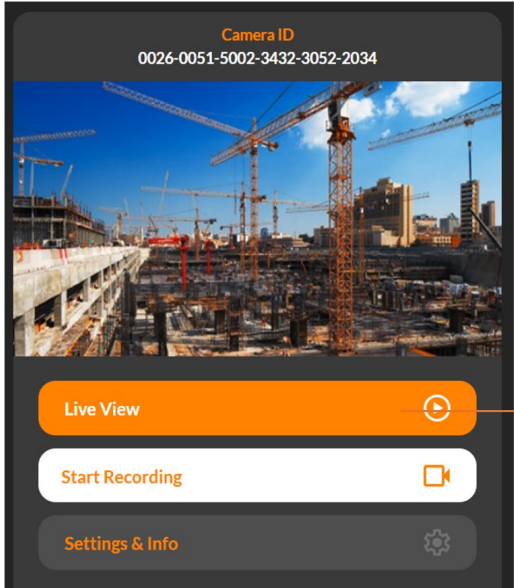
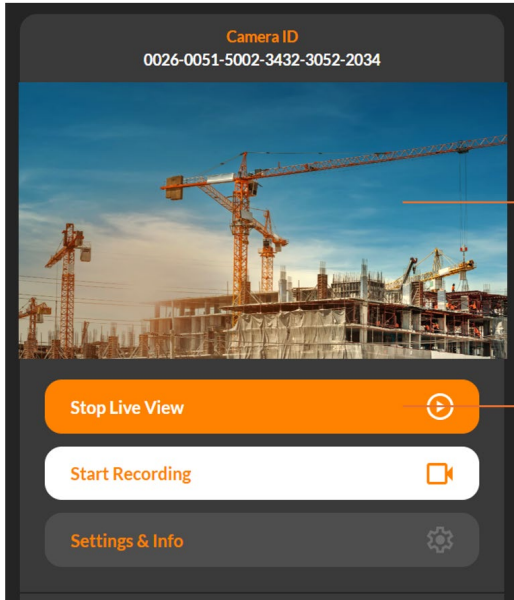
If the Disconnected  icon appears next to the Camera ID, it means the camera's Wi-Fi connection is disconnected.

- Please wait a few seconds and try logging into the Wi-Fi Operation web app again.
- If the issue persists, check the camera and Wi-Fi signal for possible problems.

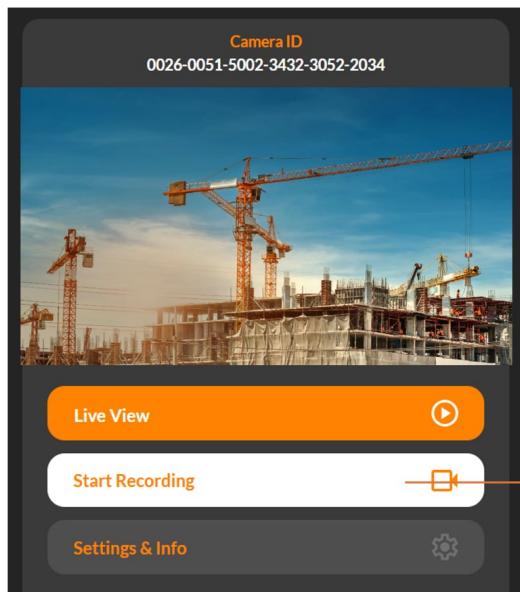
## 3. Disconnection

When disconnected, Live View and Start Recording functions will be unavailable.

# Wi-Fi | Live View

 <p>The screenshot shows the camera app interface. At the top, it displays 'Camera ID' and a long ID number. Below this is a live video feed of a construction site with cranes. At the bottom, there are three buttons: 'Live View' (orange), 'Start Recording' (white), and 'Settings &amp; Info' (grey). A red circle with the number 1 is placed over the 'Live View' button.</p>	<p><b>While camera is connected to Wi-Fi</b></p> <ol style="list-style-type: none"><li>1. Click <i>Live View</i></li></ol>
 <p>The screenshot shows the camera app interface after the live view has been activated. The video feed is still visible. The 'Live View' button has been replaced by a 'Stop Live View' button (orange). A red circle with the number 3 is placed over the 'Stop Live View' button. Another red circle with the number 2 is placed over the video feed.</p>	<ol style="list-style-type: none"><li>2. <b>View Live Image</b> The camera streams live images at 5–10 frames per second, shown on the screen.</li><li>3. <b>Stop Live View</b> Click again to stop Live View. <b>Note: Live View is unavailable while the camera is recording.</b></li></ol>

# Wi-Fi | Start/Stop Recording

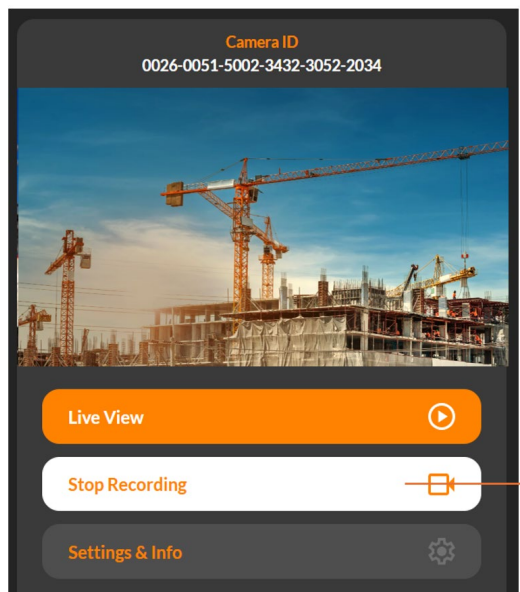


After completing Time Interval and Schedule settings:

**1. Click *Start Recording***

Begin recording your time-lapse project.

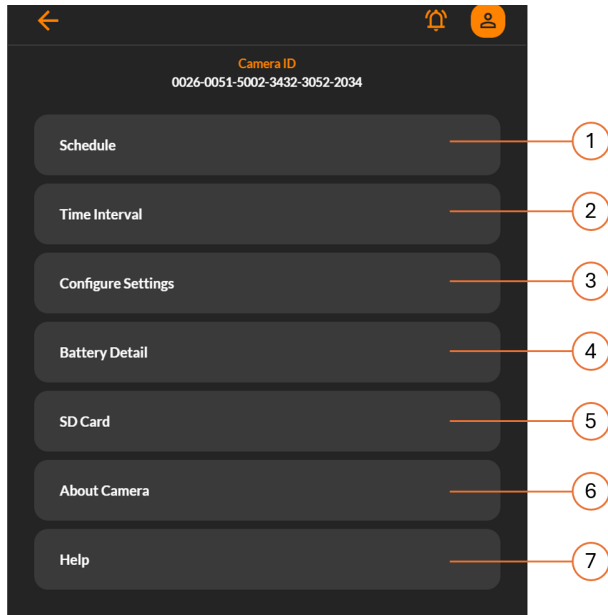
**Note: Live View, Time Interval & Schedule are unavailable while the camera is recording.**



**2. Click *Stop Recording***

Click again to stop recording.

# Wi-Fi | Settings & Info



## 1. **Schedule**

Set the daily & weekly recording schedule.

## 2. **Time Interval**

Choose or customize the time interval.

## 3. **Configure Settings**

Flicker filter, time stamp, image setting, playback rate.

## 4. **Battery Details**

View the remaining battery level of the camera and the power housing.

## 5. **SD Card**

Check and manage files stored on the SD card.

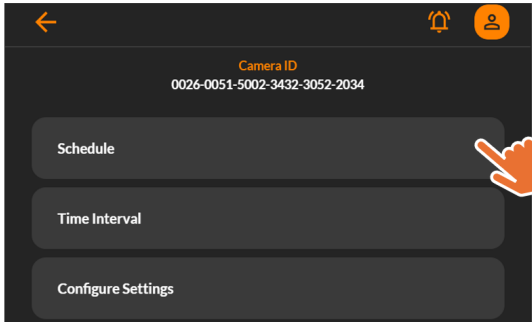

## 6. **About Camera**

View the current firmware version and update via OTA (Over-the-Air).

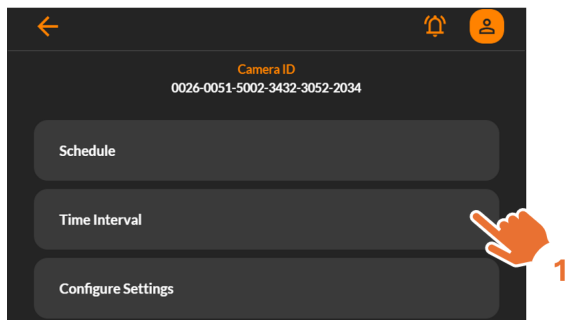
## 7. **Help**

FAQ

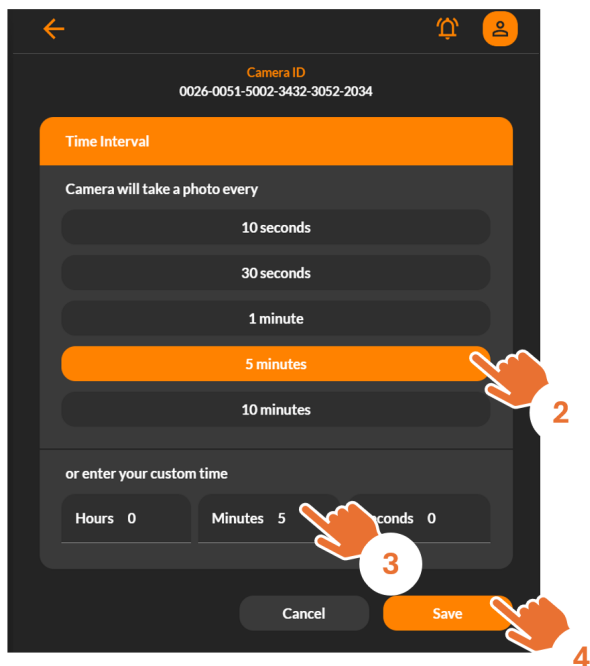
# Settings | Schedule

	<p>1. Click <i>Schedule</i>.</p>
	<p>2. Enable/disable Schedule. 3. Select <i>Start Recording Time</i>. 4. Decide <i>Recording Duration</i>. 5. Choose Schedule Days (days of the week to record). 6. File Split Options. - <b>Continuous</b>: Combines multiple days into a single video file. - <b>Daily</b>: Creates one file per day. *Files over 500 MB will be split automatically. 7. Click <i>Save</i> to confirm the schedule.</p>

# Settings | Time Interval



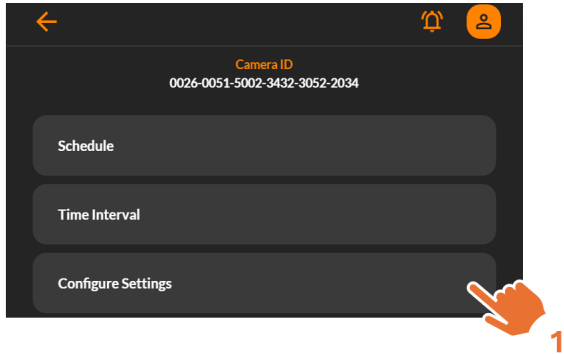
1. Click *Time Interval*.



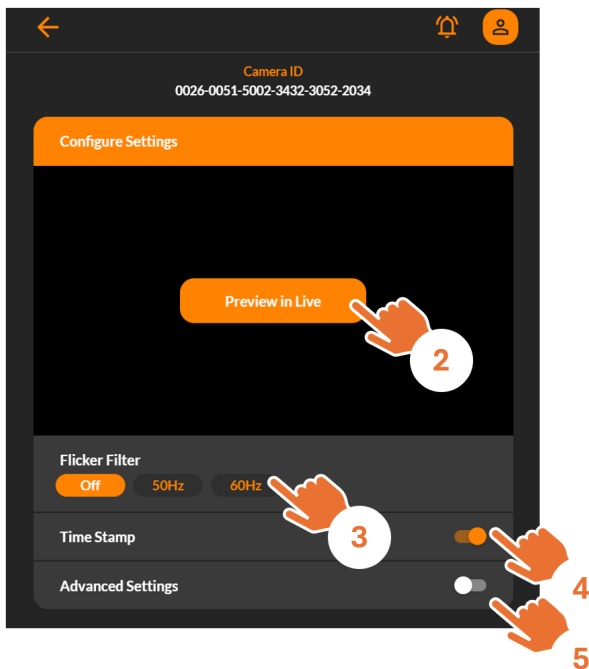
2&3. Select desired time interval, or customize time interval according to your need.

4. Click *Save* to apply.

# Settings | Configure Settings



1. Click *Configure Setting*.



2. Optionally preview the image in Live View for advanced adjustments.

3. **Flicker Filter**

**Off:** Recommended for outdoor use.

**50 Hz:** Europe, Africa, South East Asia, China, Australia and East Japan.

**60 Hz:** America, Taiwan, Korea, Philippines, West Japan.

**Note:** Please set your preferred flicker filter for indoor recording.

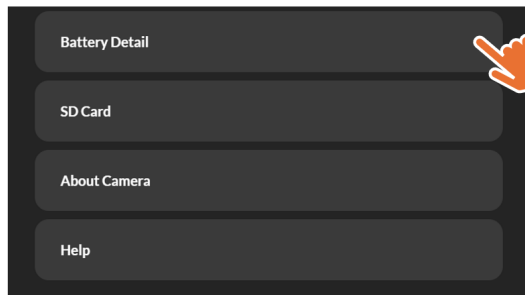
4. **Time Stamp**

Enable/disable time stamp.

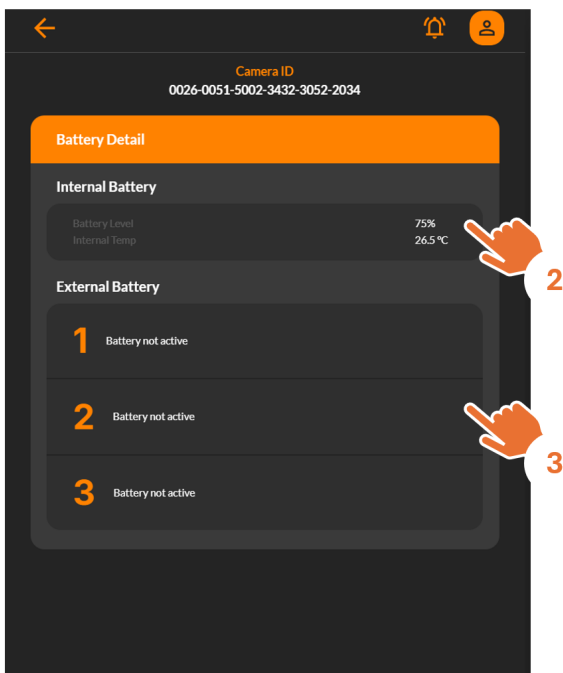
5. **Advanced Settings**

Sharpness, saturation, and playback rate settings.

# Settings | Battery Details



1. Click *Battery Detail*.



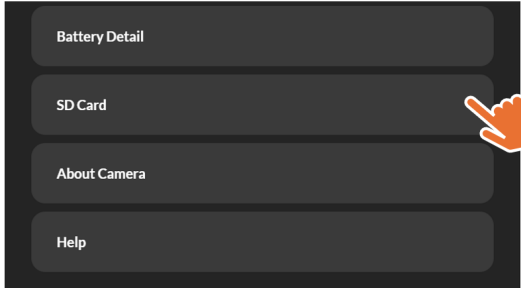
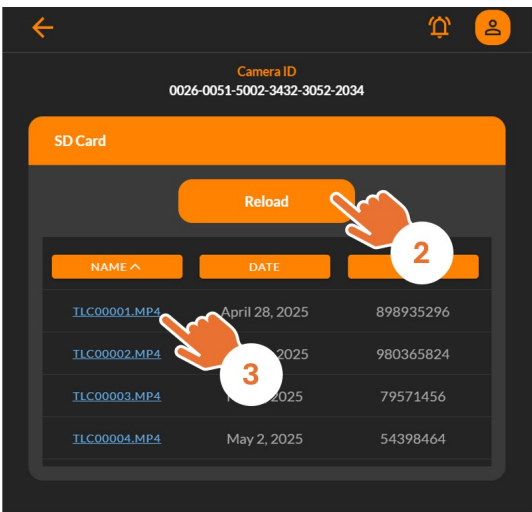
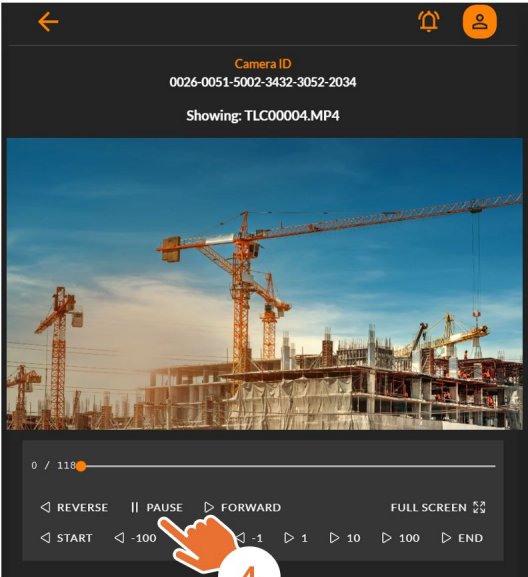
## 2. Internal Battery

Displays the current battery level of the in-camera (internal) battery.

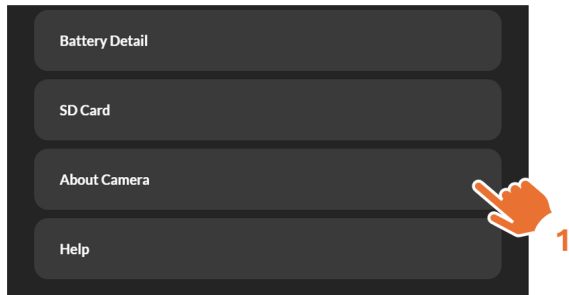
## 3. External Battery

Displays the battery level of the external battery (located in the camera housing).

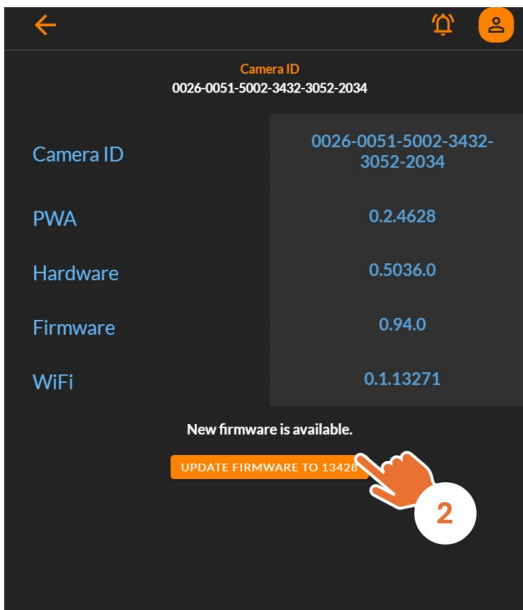
# Settings | SD Card

	<p>1. Click <i>SD Card</i>.</p>
	<p>2. Click <i>Reload</i> to refresh and display the latest stored videos.</p> <p>3. Click a <i>file name</i> to begin playback.</p>
	<p>4. Video playback page to view the selected recording.</p>

# Settings | About Camera



1. Click *About Camera*.

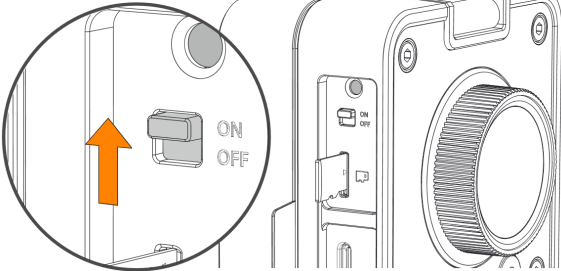


2. Firmware upgrade.

# On-Camera Operation

---

# On-Camera Operation

	<p>Turn on the camera.</p>
	<p><b>Start Recording</b></p> <ol style="list-style-type: none"><li>1. Select the desired time interval by pressing <b>Time Interval</b> button.</li><li>2. Position the camera as needed. (Tip: Use the spirit level.)</li><li>3. Press and hold the <b>Start/Stop</b> button for 2 seconds.</li><li>4. The Interval LED will light up and begin blinking.</li></ol> <p><u>How can I know if the camera is recording?</u></p> <ul style="list-style-type: none"><li>• During Recording, the <b>start/stop button</b> LED blinks once every 8 secs.</li><li>• Pressing the <b>Start/Stop</b> or <b>Time Interval</b> button will make the selected interval LED light up briefly.</li></ul> <p><b>Stop Recording</b></p> <ol style="list-style-type: none"><li>5. Press and hold the <b>Start/Stop</b> button for 3 seconds.</li><li>6. The Interval LED will light up and the <b>Start/Stop</b> button LED will blink for several seconds.</li></ol>

